

2013

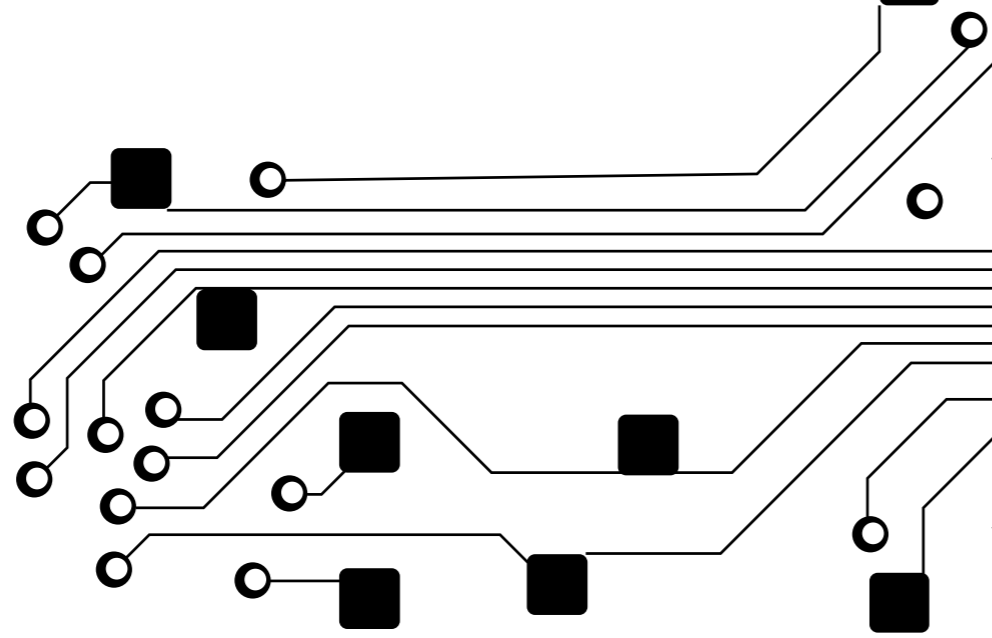


Montarbo[®]
made in Italy



INDEX

OUR ICONS	02
A SUCCESSFULL HISTORY	04
LOGO HISTORY	06
PROFESSIONAL LINE	
LINE ARRAY+SUBWOOFERS	10
MOL SERIES	12
LOUDSPEAKERS	
FIRE SERIES	16
WIND SERIES	18
FULL SERIES	20
E616 SERIES	22
WIDE SERIES	26
SPOT SERIES	28
W SERIES	30
NM SERIES	34
TANK SERIES	36
SUBWOOFERS	
EARTH SERIES	42
BX SERIES	44
STAGE MONITORS	
FLOOR SERIES	48
M SERIES	52
POWER AMPLIFIERS	
PLM SERIES	56
GRAVIS SERIES	58
MIXING CONSOLES + COMBOS	
MC-R SERIES	62
MX-C SERIES	64
MP SERIES	66
ACCESSORIES	
LINE ARRAY ACCESSORIES	70
LM SERIES	72
LD SERIES	74
STANDS+BAGS+COVERS	76
NOTE	78



OUR ICONS

SITUAZIONI DI UTILIZZO CONSIGLIATE DAI TECNICI MONTARBO® USAGE SITUATIONS SUGGESTED BY MONTARBO® TECHNICIANS



Tour live, festival, concerti.
Touring, festivals, concerts.



Sale teatrali, arene per concerti, gallerie d'arte.
Concert hall, opera, art gallery.



Discoteche, club musicali, sale prova.
Disco clubs, rock clubs, rehearsal rooms.



Piano bar, ristoranti, pub.
Piano bar, restaurants, pubs.



Luoghi all'aperto con condizioni atmosferiche difficili.
Outdoor spaces with hard weather conditions.

INFORMAZIONI TECNICHE SPECIFICHE TECHNICAL FEATURES

CANALI
CHANNELS



Rappresenta il numero di canali totali disponibili per la categoria mixer.
Total number of channels available for the mixer category.

PESO
WEIGHT



Rappresenta il peso totale del prodotto espresso in kg.
Total product weight (in kg).

POTENZA
POWER



Rappresenta il valore di targa della potenza.
Power plate value.

DISPERSIONE
DISPERSION



Indicazione relativa della direttività.
Indication of directivity.

LIVELLO PRESSIONE SONORA
SOUND PRESSURE LEVEL



Indicazione empirica della distanza raggiungibile.
Empirical indication of distance that can be reached.

MONTARBO® A SUCCESS FULL HISTORY



Erano da poco iniziati gli anni '50 quando a Bologna Sergio Montanari iniziò a costruire i primi sistemi di amplificazione, dapprima contraddistinti dal nome **SuperMB** e successivamente **Montarbo®**.

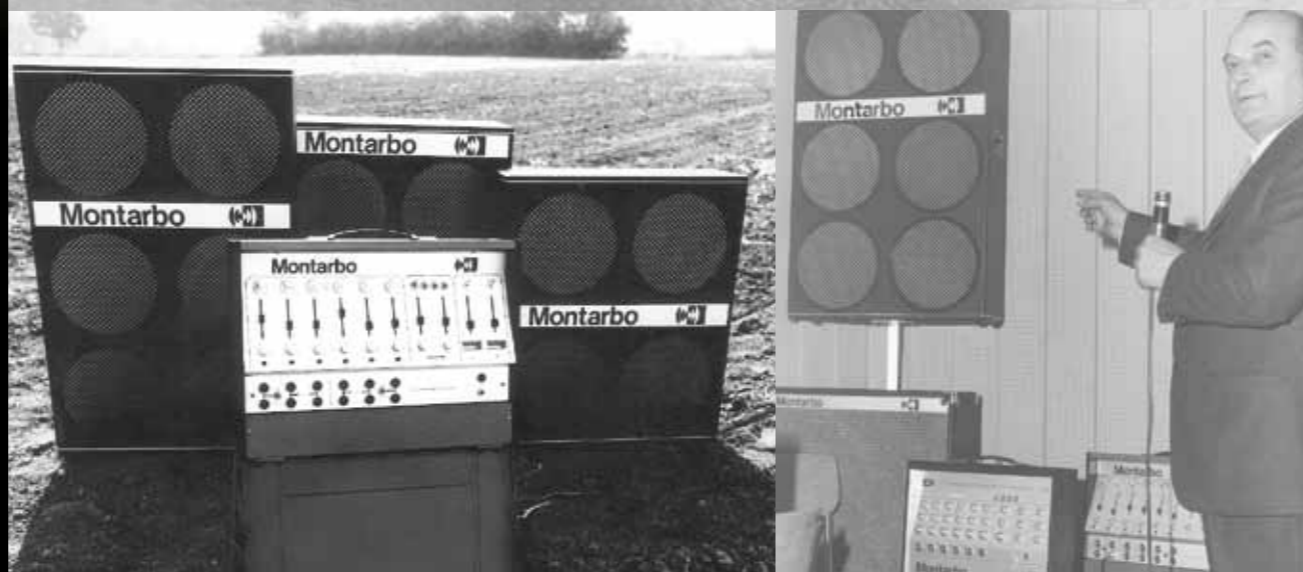
Il marchio di fabbrica, quello stesso che ancora oggi accompagna i nostri prodotti, fu introdotto solo nel 1962. A quei tempi, buona parte del successo di questa azienda era dovuto principalmente ad un apparecchio molto particolare, così innovativo da renderla rapidamente famosa in Italia e nel resto del mondo. Era uno dei primissimi mixer amplificati, ispirato ad un concetto ergonomico a quei tempi inusuale: una valigetta portatile, i cui coperchi fungevano da supporto, conteneva un mixer a sei canali, un amplificatore da 100 W e un'unità eco unica nel suo genere che fu brevettata in tutto il mondo.

Questa funzionava con una memoria magnetica che non richiedeva manutenzione, grazie all'assenza di attriti meccanici, e rispetto agli eco a nastro di allora vantava un'affidabilità e una qualità senza eguali. Quel primo successo era già fondato sulla filosofia di produzione che ancora oggi contraddistingue il marchio Montarbo®: semplicità d'uso, versatilità, cura dei materiali, innovazione tecnologica e, soprattutto, affidabilità.

*It was back in the early fifties that Sergio Montanari started to build his first sound amplification systems, at first under the name **SuperMB**, later **Montarbo®**. Our trademark, the one still shown on our products, was introduced in 1962.*

In those days Montarbo® owed much of its success to a very special product: an innovative device that quickly made the company famous in Italy and in the rest of the world. It was a special powered mixer featuring a revolutionary ergonomic principle.

A six-channel mixer, a 100 W power amp and a "magnetic-memory" echo unit were built into a portable metal case with lids doubling as supports when opened. The magnetic memory echo unit was a groundbreaking Montarbo® patent, which needed no maintenance and no cleaning thanks to the complete absence of any mechanical friction, a great benefit compared to tape units popular at that time. This original success was inspired by the same product philosophy which still guides Montarbo® today: ease-of-use, versatility, top quality, appropriate materials, technological innovations, and, foremost, reliability.



LOGO HISTORY

SuperMB

— *Montarbo* —

Montarbo 

Montanari iniziò a costruire i primi sistemi di amplificazione, dapprima contraddistinti dal nome **SuperMB** e successivamente **Montarbo**®. L'attuale logo fu disegnato nel 1962 a Bologna dal grafico tedesco **Walter Hergenröther** e pubblicato su libri internazionali di graphic design in Italia, Stati Uniti e Giappone.

*Sergio Montanari started to build his first sound amplification systems, at first under the name **SuperMB**, later **Montarbo**®.*

*Our trademark, the one still shown on our products, was designed in 1962 by the German graphic designer **Walter Hergenröther** and was published on several International graphic design books in Italy, USA and Japan.*



THE BEST SOUND IN THE EASIEST WAY

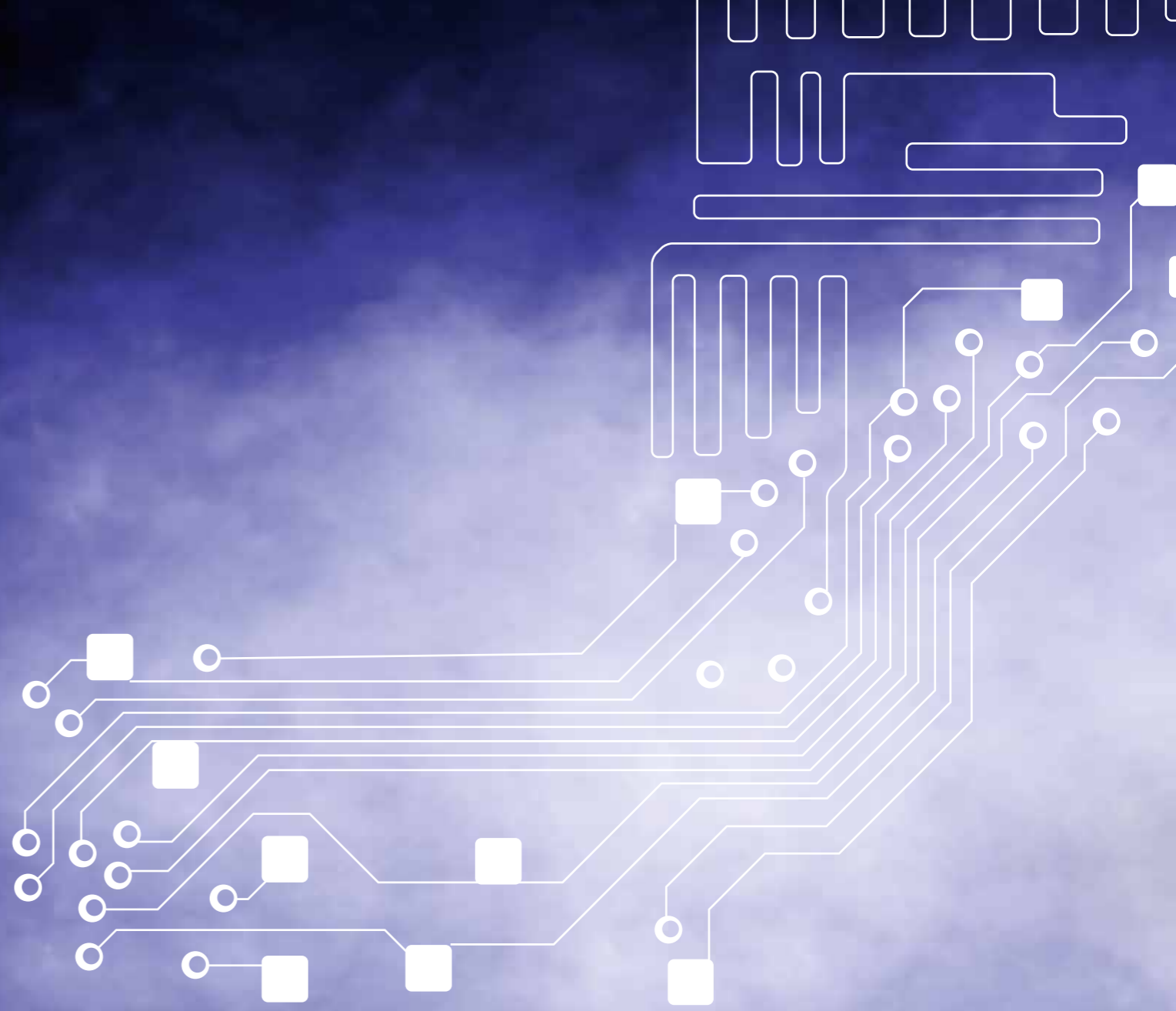
Seguendo questa filosofia, sono poi nati sempre nuovi prodotti: prima una numerosa e fortunata serie di mixer amplificati, nel 1965 le prime casse autoamplificate, alcuni anni dopo il primo mixer quadrifonico poi gli amplificatori per basso con testata separata e all'inizio degli anni ottanta eravamo tra i primi a progettare processori multieffetto controllati completamente via software. Sul versante più attuale della tecnologia oggi siamo attivi su due fronti: collaudiamo i nostri apparecchi nei concerti live più impegnativi, in condizioni di utilizzo infinitamente più gravose di quelle consuete per i nostri utenti, mentre, al contempo, nei laboratori del nostro centro di ricerca progettiamo e costruiamo strumenti digitali di analisi sempre più sofisticati per studiare i nostri sistemi di amplificazione.

In questo modo siamo in grado di trasferire l'innovazione tecnologica a tutti i nostri prodotti, anche alle serie più economiche, e di garantire che tutti i sistemi Montarbo®, qualsiasi sia il loro prezzo, offrano caratteristiche assolutamente professionali.

The company continued to create new products in keeping with this philosophy of excellence, including a wide range of amplified mixers, followed in 1965 by the first self-powered speaker enclosures, and shortly after by the first quadriphonic mixers and by the bass amplifiers with separate head units. In the early eighties we were one of the first audio companies to design software-assisted effects processors.

Nowadays, we develop our technology using a two-path approach: first we test our products in the most demanding live-concert environment where operating conditions are much more severe than anything most of our users has to deal with, second we design and build our own digital tools for the testing and analysis of electroacoustic systems. Combining the best of both worlds, we can incorporate leading-edge technology in all our products, from the more sophisticated to the more economic. And each of our products, whatever its price, is clearly "professional grade".

**PROFESSIONAL
LINE
DEFINITELY
SHOUTS OUT**



LINE ARRAY+ SUBWOOFERS

F030010
RA16

F030011
RAB1815

F030007
RA18

F030008
RA18X



RAB1815



RA16

RA18



RA18X

AFTER 50 YEARS STILL SHOUT OUT ON STAGES

La linea più efficiente e in assoluto performante di casa Montarbo® è creata a regola d'arte con il top della qualità tutta italiana. Pur essendo la prima vera sfida in versione "arrayable" per l'azienda bolognese, questo Line Array sta smantellando i pregiudizi dei più scettici, con i complimenti degli esperti esterrefatti nello scoprire una qualità audio stupefacente anche in zone più nascoste rispetto al punto focale. La tromba è ciò che colpisce: grazie all'apertura calibrata e performante, abbatte i limiti della direttività, appagando l'udito sopraffino con una qualità e pulizia di suono ai massimi livelli. Il cabinet trasportabile a mano senza sforzi eccessivi è estremamente compatto e resistente. Associato all'immane subwoofer ad alte prestazioni, il prodotto diviene un sogno realizzabile per gli amanti dell'audio al top della professionalità. A seconda delle esigenze di location o dei diversi palchi, Montarbo® dà la possibilità di scegliere se associare ai RA16 la serie di subwoofer RAB1815, progettata in composizione cardioide per una timbrica pulita e non troppo invadente da utilizzare a pavimento, oppure RA18 o RA18X indicati per l'utilizzo in aria. Per gli incontentabili, il massimo della pressione sonora si ottiene associando il MOL1818, per apprezzare i Line Array Montarbo® a livelli mai raggiunti.

The most efficient, high-performance professional line by Montarbo® has been created with the highest standards associated with the made-in-Italy quality. Although this Line Array system is the company's first venture into the field of arrayable loudspeakers, it quickly sweeps away all the doubts and prejudices of the sceptics. Experts are amazed that such remarkable audio quality can be achieved, even in areas well away from the focal point. The directional horn strikes the discerning ear: thanks to its calibrated, high-performance aperture, it overcomes directional limitations, satisfying every listener with clean and high-quality sound. The very compact, sturdy cabinet can easily be carried by hand. Together with the high-performance subwoofer, this line is a dream come true for lovers of top-quality professional audio. Depending on locations or the stages to be equipped, the choice consists of two subwoofers which can both be used together with the RA16: the RAB1815 floor-standing series, designed in a cardioid way for a clean, not-overpowering tone and either RA18 or RA18X series which is suitable to be hung. The most demanding listener can obtain the best audio experience combining the RA16 with the MOL1818, in order to take functionality up to maximal heights.

I tecnici Montarbo® ne suggeriscono le seguenti applicazioni:
Montarbo® technicians suggest the following applications:



ACCESSORIES RAB1815: COV-RAB (p.71), SK-RAB (p.71)

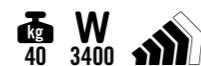
SPECIFICATIONS	RA16	RAB1815	RA18	RA18X
Frequency Response	70 Hz ÷ 20 kHz	30 Hz ÷ 120 Hz	50 Hz ÷ 100 Hz	50 Hz ÷ 100 Hz
Cross-over frequency	800 Hz; 24 dB/oct
Transducers	LF HF	2 x 8"; 2.5" voice coil 1 x 1.4" - throat compression driver 3" voice coil, titanium diaphragm	1 x 18"; 4" voice coil 1 x 15"; 4" voice coil	1 x 18"; 4" voice coil ...
Max Power Handling	LF HF 18" 15"	800 W @ 8 Ω 200 W @ 16 Ω	1700 W @ 4 Ω 1600 W @ 4 Ω 1600 W @ 4 Ω	3400 W @ 8 Ω
Max SPL	130 dB (@ 1 m; single enclosure; half space)	136 dB (@ 1 m; half space)	130 dB (@ 1 m; half space)	133 dB (@ 1 m; half space)
Dispersion	120° Horizontal Vertical coverage depends on array configuration	Cardioid polar pattern; -15 dB @ 180° (40 Hz-100 Hz)	Omnipolar	Omnipolar
Construction	15 mm birch plywood finished with high-impact, chip-resistant paint	18-21 mm birch plywood with chip-resistant paint
Fittings	Each RA16 enclosure is supplied with - 2 rear steel plates that allow the assembly of the enclosures in the array and for adjusting the vertical splay angle between units; - 6 highly resistant quick release pins with ball safety lock (3/8" x 1/2"); - coupling hardware fully incorporated, made of aircraft-grade, nickel-chromiummolybdenum steel
Dimensions (WxHxD)	527 x 282 x 440 mm	506 x 762 x 748 mm	527 x 540 x 550 mm	527 x 540 x 550 mm
Weight	18 kg	58 kg	34 kg	40 kg

RA16

RAB1815

RA18

RA18X



MOL SERIES

F000464
MOL1818 SubOne

F000465
MOL1818A SubOne

MOL1818 SUBONE



MOL1818



MOL1818A



ARE YOU SURE IT WAS AN EARTHQUAKE ?

Con la sua architettura avanzata e originale, **MOL1818 SubOne** introduce una nuova categoria di subwoofer, una serie che non permette confronti; in altre parole, un prodotto senza eguali sul mercato.

Progettato e creato appositamente per la musica dal vivo, il **MOL1818 SubOne** dispone di una potenza di livelli mastodontici, con il massimo dell'efficienza e della neutralità timbrica.

Nato per essere il più potente sub in casa Montarbo®, e sposandosi perfettamente con l'energia dei **RA16** del sistema Line Array, il **MOL1818 SubOne** si sta confermando il più apprezzato fra scettici ed esigenti del settore, grazie all'effetto "punch" che è in grado di realizzare all'altezza del ventre, e grazie anche al suo fascino del tutto innovativo e all'avanguardia.

Se neanche questo vi basta, e volete provare l'ebbrezza di prendere il volo senza ali o essenze particolari, Montarbo® vi dà la possibilità di sovrapporre due **MOL1818**, ottenendo una pressione sonora indescrivibile, con potenza e controllo fino all'ultimo watt senza alcun compromesso.

Disponibile in versione sia attiva sia passiva, questo SubOne, è consigliato dai tecnici Montarbo® associato al sistema TOP Line Array.

*With its advanced, original architecture, the **MOL1818 SubOne** introduces a new category of subwoofers, a series that is quite simply with no comparison at all; in other words, a product which is unequalled on the market.*

*Designed and created specifically for live music, the **MOL1818 SubOne** features massive power levels, with maximum efficiency and neutrality of timbre.*

*Conceived as the most powerful sub Montarbo® wished to offer, and matching perfectly with the energy of the **RA16** of the Line Array system, the **MOL1818 SubOne** is gaining standing as the most popular amongst the most demanding sector sceptics thanks to the "punch" effect to the stomach and its entirely innovative, cutting-edge fascination.*

*And as though this alone were not enough, and you want to experience the thrill of taking off without wings, Montarbo® can overlay two **MOL1818 SubOnes**, thereby obtaining simply indescribable sound pressure, with power and control right to the last watt with no compromise.*

*Available both active and passive, this **MOL1818 SubOne** is recommended by Montarbo® technicians together with the TOP Line Array system.*

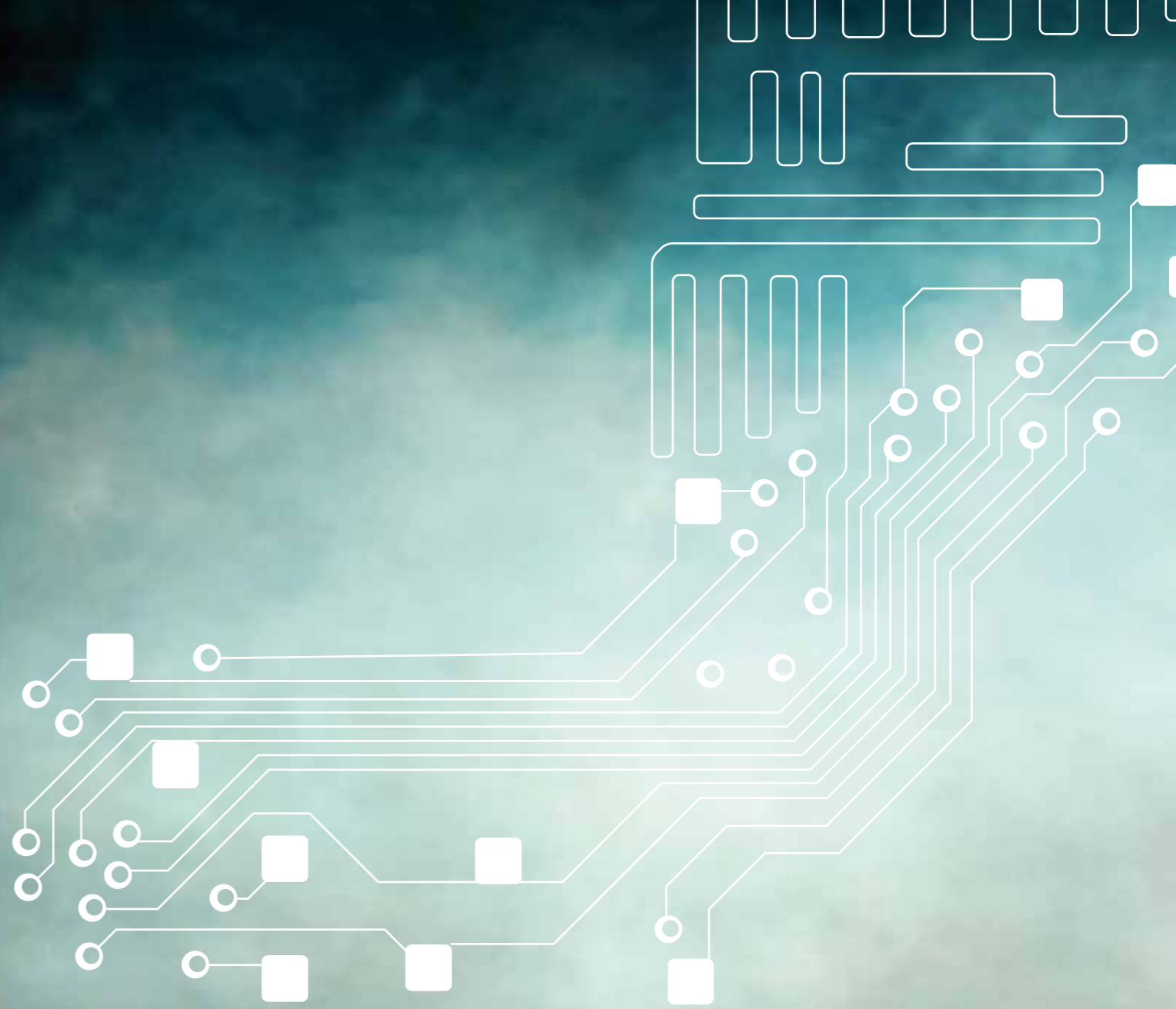
I tecnici Montarbo® ne suggeriscono le seguenti applicazioni:
Montarbo® technicians suggest the following applications:



ACCESSORIES MOL1818 SubOne · MOL1818A SubOne: COV-MOL1818 (p.71)

SPECIFICATIONS	MOL1818 SubOne	MOL1818A SubOne
Enclosure	Bandpass-Horn	Bandpass-Horn
Components	Custom-designed	Custom-designed
Frequency response	42 Hz ÷ 90 Hz (-3 dB) no EQ. 35 Hz ÷ 120 Hz (-10 dB) no EQ.	42 Hz ÷ 90 Hz (-3 dB) no EQ. 35 Hz ÷ 120 Hz (-10 dB) no EQ.
Transducers	2 x 18" woofers, 4,5" voice coil	2 x 18" woofers, 4,5" voice coil
Built-in amplifier	...	2 class-D power units (1700 W + 1700 W)
Built-in DSP	...	DSP Montarbo®
Management functions	...	Filtering, EQ, delay, limiting, diagnostic, 5 presets, 1 of which custom-programmable, remote control by PC by means of USB interface LD2.4 (optional device)
Nominal Impedance	4 Ω + 4 Ω	...
Max SPL	144 dB/1 m with PLM6800 (1700 W + 1700 W, 4 Ω)	144 dB @ 1 m
Max handling power	2500 W + 2500 AES / 4 Ω	...
Dispersion	Omnidirectional	Omnidirectional
Connectors	8 poles Speakon®	Line input (balanced XLR)
Fittings	Carrying handles, Optional wheels	Carrying handles, Optional wheels
Dimensions (WxHxD)	1160 x 605 x 900 mm	1160 x 605 x 900 mm
Weight	108 kg	110 kg

LOUDSPEAKERS
LET'S GET
LOUDER



FIRE SERIES

F000506
FIRE10A

F000505
FIRE12A

FIRE12A

FIRE10A

FIRE10A

FIRE12A



FROM FIRE+ BRIMSTONE CAME THE CREATURES

Solo il nome basterebbe a descrivere questa nuova linea di casse full range, ma per giusta causa è corretto articolare questo prodotto secondo alcuni punti fondamentali.

Il connubio fra qualità e prezzo che Montarbo® è riuscita a creare per la serie **FIRE** presentata a Francoforte nel 2012, rende questa cassa un fiore all'occhiello da aggiungere agli altri successi dell'azienda emiliana, dando la possibilità di avere una qualità audio da livelli top anche a chi di solito è abituato ad accontentarsi.

Tutto questo è racchiuso in un cabinet in legno robusto e duraturo che solo le concorrenti in plastica potrebbero pensare di battere sul prezzo.

Volete prendere una decisione seria e veritiera? Provate ad accenderle.

La ricerca tecnologica e l'uso dei filtri FIR hanno permesso di creare un oggetto di classe e di qualità che, grazie ad un wattaggio corposo e bilanciato, ne permette l'uso dalle più piccole alle più grandi ed esigenti situazioni musicali.

*The name alone successfully describes this new line of full-range speakers, but we must of course correctly structure this product according to some key points. The high quality at the right price offered by Montarbo® in the **FIRE** series presented in Frankfurt in 2012, makes these speakers a real jewel in the crown to be added to the many other successes of the Italian Company based in Emilia, giving even those used to having to "make do" the chance to enjoy top audio quality.*

All this enclosed in a hard-wearing, long-lasting wooden cabinet at a price that only competitor plastic products may risk beating.

Want to make an informed, honest decision? Just switch'em on.

Technological research and the use of FIR filters have enabled us to create a high-class, high-quality object with solid, balanced wattage in order to enable you use it in every circumstance, from the smallest to the largest and most demanding musical situations ever.

I tecnici Montarbo® ne suggeriscono le seguenti applicazioni:
Montarbo® technicians suggest the following applications:



SPECIFICATIONS	FIRE10A	FIRE12A
Enclosure	2-way bass-reflex	2-way bass-reflex
Frequency response	60 ÷ 20000 Hz	50 ÷ 20.000 Hz
Continuous SPL	124 dB	125 dB
Components	Custom-designed	Custom-designed
LF	1 x 10" woofer (3" voice coil)	1 x 12" woofer (3" voice coil)
HF	1 x compression driver (1" throat, 1.4" voice coil)	1 x compression driver (1" throat, 1.4" voice coil)
	Constant directivity horn (80° H x 60° V)	Constant directivity horn (80° H x 60° V)
Electronic cross-over	1700 Hz	1700 Hz
Built-in amplifier	2 class-D power units	2 class-D power units
LF power	750 W	750 W
HF power	150 W	150 W
Built-in DSP	Montarbo®, 24bit converter FIR filters	Montarbo®, 24bit converter FIR filters
Connections and controls	Microphone input (balanced XLR) with gain control Line input (Jack + XLR Combo connector) Volume control Switchable Link/Mixed output (balanced XLR) HiPass switch BassBoost switch Status LED indicators (on, signal, clipping, thermal warning protection)	Microphone input (balanced XLR) with gain control Line input (Jack + XLR Combo connector) Volume control Switchable Link/Mixed output (balanced XLR) HiPass switch BassBoost switch Status LED indicators (on, signal, clipping, thermal warning protection)
Construction	Birch plywood coated with high-impact and chip resistant paint 2 mm steel protection grille with foam	Birch plywood coated with high-impact and chip resistant paint 2 mm steel protection grille with foam
Fittings	Carrying handle Speaker-stand adapter	Carrying handle Speaker-stand adapter
On stage floor angle	55°	55°
Dimensions (WxHxD)	325 x 512 x 350 mm	366 x 580 x 365 mm
Weight	19.5 kg	20.5 kg

WIND SERIES

F000503
WIND2012

F000504
WIND2200

WIND2200

WIND2012

WIND2012

WIND2200



WHERE EAGLES CAN'T FLY

Questa nuovissima serie rappresenta il massimo della tecnologia attuale riscontrabile in circolazione, combinata con l'accurata ricerca di leggerezza e maneggevolezza.

Le **WIND** infatti - che già dal nome lascia intuire la filosofia secondo cui nasce il progetto - sono uno strumento estremamente performante e ultra potente che, grazie ai migliori componenti *made in Italy*, esaudisce ogni desiderio di una cassa direzionale che vuole e riesce ad arrivare dove le altre non arrivano.

Attesissima sul mercato dopo il suo lancio a Francoforte 2012, questa nuova linea Montarbo® non aspetta altro che stupire e rendere gli acquirenti orgogliosi della scelta, facendo di una cassa la perfetta alleata per performance di successo.

Disponibile in due versioni, una in sistema d'Appolito e l'altra in versione bass reflex.

This brand new series represents the very best of current technology available on the market, combined with a careful search for lightness and easily-handled solutions.

*The name assigned to this series, **WIND** in itself gives an idea of the philosophy behind the project. We are dealing with an extremely high-performing, ultra-powerful product that thanks to the very best made-in-Italy products has no difficulty in satisfying all your desires for a directional loudspeaker that seeks to go where others cannot.*

Long-awaited by the market after its launch in Frankfurt in 2012, this new Montarbo® line looks forward to amazing its lucky buyers, making them proud of having chosen such a perfect ally for successful performances. Available in two different versions, one in a symmetrical (D'Appolito) configuration and the other one in a bass reflex version.

I tecnici Montarbo® ne suggeriscono le seguenti applicazioni:
Montarbo® technicians suggest the following applications:



ACCESSORIES WIND2012 - WIND2200: LD2.4 (p.74)

SPECIFICATIONS	WIND2012	WIND2200
Enclosure	2-way bass-reflex	2-way bass-reflex
Frequency response	40 ÷ 20.000 Hz	55 ÷ 20.000 Hz
Continuous SPL	128 dB	135 dB
Components	Custom-designed LF 1 x 12" woofer (4" voice coil) HF 1 x compression driver (1.4" throat, 3" voice coil) Constant directivity horn (80° H x 60° V)	Custom-designed 2 x 10" woofers (3" voice coil) 1 x compression driver (1.4" throat, 3" voice coil) Constant directivity horn (60° H x 40° V)
Electronic cross-over	800 Hz	900 Hz
Built-in amplifier	2 class-D power units	2 class-D power units
LF power	1500 W	2000 W
HF power	500 W	500 W
Built-in DSP	Montarbo®, 24bit conv. FIR filters	Montarbo®, 24bit conv. FIR filters
Connections and controls	Line input (balanced XLR) with Volume control Line link Digital input, Digital link (balanced XLR) In-out remote control (RJ45) Switchable analog/digital input, Preset select switch Status LED indicators (on, signal, clipping, thermal warning protection, number preset, analog/digital input)	Line input (balanced XLR) with Volume control Line link Digital input, Digital link (balanced XLR) In-out remote control (RJ45) Switchable analog/ digital input, Preset select switch Status LED indicators (on, signal, clipping, thermal warning protection, number preset, analog/digital input)
Construction	Birch plywood coated with high-impact and chip resistant paint 2 mm steel protection grille with foam	Birch plywood coated with high-impact and chip resistant paint 2 mm steel protection grille with foam
Fittings	Carrying handle Speaker-stand adapter	Carrying handle Speaker-stand adapter
On stage floor angle	45°	...
Dimensions (WxHxD)	420 x 655 x 429 mm	358 x 866 x 400 mm
Weight	30 kg	32 kg

FULL SERIES

F000384
FULL612

F000387
FULL1018

F000395
FULL1018ST



IN FULL SWING YOU CAN ROLL THE STONES

In fase di sviluppo, la serie **FULL** si è scolpita sul proprio cabinet questo nome non a caso: questo sistema è tutto ciò che serve a DJ e Band di qualità che necessitano della potenza di un vero PA System nelle stesse dimensioni usate dalla concorrenza per prodotti di livello molto inferiore.

La serie vanta una potenza estremamente elevata con una qualità degna dei fratelli di categoria TOP della casa produttrice, tutto controllabile tramite DSP Montarbo® e gestibile anch'essa attraverso il software RACon™, che permetterà di impostare e memorizzare i preset con le varianti che si presenteranno nei differenti locali in cui si andrà a suonare, grazie anche all'invidiata portabilità e versatilità di questo prodotto, unita alla garanzia del *made in Italy* by Montarbo®

Currently being developed, the FULL series has been modelled on its own cabinet with a name that is no coincidence: this system has everything quality DJs and bands need in terms of the power of a real PA system, yet in the same compact dimensions used by the competition for products that fall far below its level.

The series boasts extremely high power with quality worthy of the very TOP manufacturers, all controlled by means of DSP Montarbo® and using RACon™ software that allows you to set and save pre-set options with the variants featured in the different performance venues, thanks to the much-envied portable, versatile nature of this product, together with the made in Italy by Montarbo®, as well.

I tecnici Montarbo® ne suggeriscono le seguenti applicazioni:
Montarbo® technicians suggest the following applications:



ACCESSORIES FULL612: LD2.4 (p.74), BAG-F12 & BAG-2F6 (p.77) · FULL1018ST: LD2.4 (p.74), CV-F18 & CV-F10 (p.77) · FULL1018: LD2.4 (p.74), CV-F18 & CV-F10 (p.77)

SPECIFICATIONS	FULL612 - stereo 3-way active	FULL1018 - 3-way active tri-amplified	FULL1018ST stereo 3-way active
Frequency response	40 ÷ 20.000 Hz (of complete system)	37 ÷ 20.000 Hz (of complete system)	37 ÷ 20.000 Hz (of complete system)
Max SPL (peak)	FULL6: 125 dB; FULL12: 130 dB half-space	FULL10: 133 dB; FULL18: 133 dB half-space	FULL10: 126 dB; FULL18ST: 133 dB half-space
Components satellite	<p>LF Custom-designed 2 x 6" neodymium magnet woofer (2,5" voice coil)</p> <p>HF 2 x 1" driver (1.5" voice coil) elliptical tratrix high dispersion wave guide horns (80° H x 70° V)</p>	<p>Custom-designed 1 x 10" neodymium magnet woofer (3" voice coil)</p> <p>1" neodymium driver (2.5" voice coil, titanium diaphragm) high directivity (80° H x 60° V) wave guide horn</p>	<p>Custom-designed 1 x 10" neodymium magnet woofer (2.5" voice coil)</p> <p>1" neodymium driver (1.5" voice coil, titanium diaphragm) high directivity (80° H x 60° V) wave guide horn</p>
Bass cabinet	1 x 12" neodymium magnet woofer (4" voice coil)	1 x 18" neodymium magnet woofer (4" voice coil)	1 x 18" neodymium magnet woofer (4" voice coil)
Built-in power amplifier Total Output Power	3 class-D power units 2000 W EIAJ (LF 1000 + MHF right 500 W + MHF left 500 W)	3 class-D power units 2500 W EIAJ (LF 1000 + MHF 1000 W + HF 500 W)	3 class-D power units 2000 W EIAJ (LF 1000 + MHF right 500 W + MHF left 500 W)
DSP	Montarbo®, 56 bit / 180 MHz; 24 bit converters	Montarbo®, 56 bit / 180 MHz; 24 bit converters	Montarbo®, 56 bit/180 MHz; 24 bit converters
Dimensions (WxHxD)	FULL6: 210 x 333 x 208 mm FULL12: 512 x 376 x 476 mm	FULL10: 302 x 516 x 256 mm FULL18: 512 x 522 x 550 mm	FULL10: 302 x 516 x 256 mm FULL18ST: 512 x 522 x 550 mm
Weight	FULL6: 7.4 kg FULL12: 24.5 kg	FULL10: 14.4 kg FULL18: 34.8 kg	FULL10: 13.4 kg FULL18ST: 34.7 kg

FULL612

FULL1018

FULL1018ST



E616 SERIES

F000463
E616A

E616A



THE ECHO OF THE VOICES

È la serie nata per dar voce alla creatività: questa linea rappresenta un'elevata potenza concentrata in un cabinet essenziale e ultra compatto, nato esclusivamente per soddisfare l'ascolto dei professionisti più esigenti.

Questo sistema è stato creato per rendere la voce il più vicino possibile alla realtà, usando materiali ad alta efficienza e componenti interni di tecnologia avanzatissima, con la possibilità di gestirli autonomamente grazie al DSP Montarbo®.

Gli esperti tecnici Montarbo® ne consigliano un uso che spazi dal Jazz Club al monitor nearfield in studi di registrazione, da infills a frontfills nelle più eleganti composizioni di sistemi audio. Disponibile sia in versione attiva sia passiva.

This series has been designed to give creativity a voice: the line represents strong power concentrated in an essential, ultra-compact cabinet created exclusively to satisfy the most demanding professional ears.

This system has been created to make the voice as close as possible to reality, using highly-efficient materials and extremely advanced technology for the internal components, allowing their independent management through DSP Montarbo®.

The expert Montarbo® technicians recommend it for uses that range from Jazz Clubs to nearfield monitors in recording studios, infills or frontfills in the most elegant audio system compositions. Available in both an active and passive version.

I tecnici Montarbo® ne suggeriscono le seguenti applicazioni:
Montarbo® technicians suggest the following applications:



ACCESSORIES E616A: LD2.4 (p.74)

SPECIFICATIONS	E616A
Enclosure	2-way bass-reflex
Frequency response	70 Hz ÷ 18 kHz ± 2 dB
Max SPL	128 dB
Components	Custom-designed
LF	2 x 6" (2.5" voice coil) with shielded supervented neodymium magnet
HF	1" shielded compression driver (1.7" voice coil) loaded by a 80° x 60° horn tractrix
Electronic x-over filter	1400 Hz
Built-in amplifier	2 class-D power units
Total output power	650 W EIAJ (LF 500 W + HF 150 W)
Built-in DSP	Montarbo®, 56 bit / 180 MHz
Management functions	Filtering, EQ, delay, limiting, diagnostic, 5 presets, 1 of which custom-programmable, remote control by PC by means of USB interface LD2.4 (optional device)
Connections and controls	Balanced XLR connectors for input, link, processed output for driving external subwoofer, RJ45 DATA connectors for the connection to a PC (Montarbo® net), PowerCon® for mains power supply (input + link), Volume control, Status LED indicators (signal, clipping, thermal warning, protection); Active preset LED indicators
Construction	15 mm birch multiply, Anti-abrasion paint, Steel protection grille
Fittings	Speaker stand adapter Transport handle
Dimensions (WxHxD)	510 x 210 x 350 mm
Weight	15.4 kg

E616A



E616 SERIES

F000462
E616M



E616M

E616M



THE VOICE OF THE ECHOES

Questo prezioso oggetto da palco ideato da casa Montarbo® è la versione monitor della sorella **E616A**, mantenendo tutta la qualità della serie **E616**, ma questa volta ai piedi degli artisti.

La meravigliosa voce che solo dei woofer a 6" possono riprodurre è coniugata ad un performante e potente driver che permette di soddisfare anche l'udito sopraffino, evitando l'ingombro dei soliti monitor da palco.

La **E616M** riesce a donare tutta la qualità necessaria con il cabinet più piccolo possibile, e di conseguenza meno invadente agli occhi degli spettatori, fondendo al suo interno la dolcezza di una tromba corta ad ampia dispersione con il calore e la velocità di un woofer di piccole dimensioni; un connubio mai pensato prima per un monitor, riscontrabile ad oggi solo su sistemi Line Array.

Ancora una volta Montarbo® vuole servire gli artisti di ogni dove con un oggetto assolutamente innovativo e al top.

*This valuable stage item designed by Montarbo® is the monitor version of its "sister" **E616A**, which maintains all the quality of the **E616** series, but this time at the artists' feet.*

The wonderful voice that only a 6" woofer can reproduce is combined with a high-performing, powerful driver that successfully also satisfies even the finest of ears, avoiding the cumbersome solutions offered by your standard stage monitors.

*The **E616M** manages to give all the quality needed with the smallest possible cabinet and is therefore less invasive to the spectators' eyes, combining the softness of a short, wide-dispersion horn with the warmth and speed of a small woofer; an unprecedented blend for a monitor that as of today had only been available in Line Array systems.*

Once again, Montarbo® seeks to serve artists all over the world, with an entirely innovative, top-of-the-range solution.

I tecnici Montarbo® ne suggeriscono le seguenti applicazioni:
Montarbo® technicians suggest the following applications:



ACCESSORIES E616M: LD2.4 (p.74)

SPECIFICATIONS		E616M
Enclosure		2-way bass-reflex
Frequency response		80 Hz ÷ 20 KHz ± 2 dB
Sensitivity		95 dB SPL @ 1 W / 1 m on axis
Max SPL		126 dB
Components	LF MF/HF	Custom-designed 2 x 6" (2.5" voice coil) with shielded supervented neodymium magnet 1" shielded compression driver with 2,5" voice coil, loaded by a 80° x 60° horn
Passive x-over filter		1400 Hz
Impedance		8 Ω
Nominal power		650 W AES
Power handling		1300 W Peak
Recommended amplifier		750 EIAJ
Connections		3 x 4 - pole Speakon® (IN-LINK)
Construction		15 mm birch multiply, anti-abrasion paint steel protection grille
Fittings		Speaker stand adapter Transport handle
Dimensions (WxHxD)		510 x 210 x 270 mm
Weight		12.3 kg

WIDE SERIES

- F000381
WIDE123
- F000236
WIDE12P4
- F000237
WIDE12P8
- F000382
WIDE153
- F000238
WIDE15P4
- F000239
WIDE15P8



WIDE123



WIDE153



WIDE123	WIDE12P	WIDE153	WIDE15P
23 650	24.5 650	29 650	30.8 650

IT'S A REAL DAMN GOOD WIDE SOUND

Questa serie non ha bisogno di presentazioni: la sua descrizione più azzeccata sarebbe "il genio incompreso". Basta infatti ascoltarla per capire quanto impegno e dedizione siano serviti per dar vita ad un prodotto di questo livello.

L'avanzatissima serie **WIDE** vanta una tecnologia interna da far invidia ai migliori ingegneri del suono, corredata dall'innovativo DSP Montarbo® che ne permetta la piena adattabilità agli utilizzi più svariati.

La nitidezza del suono riprodotto, la linea moderna unita alla meticolosa selezione dei componenti acustici, la precisione dei dettagli e la possibilità di averla anche in versione passiva da 4 e 8 Ω rendono questa serie estremamente versatile, potente e di qualità sublime, senza precludere la possibilità di utilizzo come monitor.

This series has no need for introduction: it is most accurately described as the "misunderstood genius". You need simply listen to it to understand just how much effort and devotion it has taken to produce a product of this quality.

*The extremely advanced **WIDE** series boasts internal technology that is the envy of the very best sound technicians, complete with the innovative DSP Montarbo®, which enables it to be fully adapted to all sorts of contexts.*

The clearness of the sound reproduced, the modern line and the meticulous selection of the acoustic components, together with the precision in the detail and the possibility of also having it in a passive version of 4 and 8 Ω make this series extremely versatile indeed, powerful and flaunting sublime quality, without precluding the possibility of using it as a monitor.

I tecnici Montarbo® ne suggeriscono le seguenti applicazioni:
Montarbo® technicians suggest the following applications:

LIVE	THEATRE	CLUB	CAFÉ
WIDE123	WIDE123	WIDE123	WIDE123
WIDE123P	WIDE123P	WIDE123P	WIDE123P
WIDE153	WIDE153	WIDE153	
WIDE153P	WIDE153P	WIDE153P	

ACCESSORIES WIDE123: LD2.4 (p.74), CV-W123 (p.77) · WIDE12P4 · WIDE12P8: CV-W123 (p.77) · WIDE153: LD2.4 (p.74), CV-W153 (p.77) · WIDE15P4 · WIDE15P8: CV-W153 (p.77)

SPECIFICATIONS	WIDE 123 - 2-way active bi-amplified	WIDE 153 - 2-way active bi-amplified
Frequency response	60 ÷ 20.000 Hz	50 ÷ 20.000 Hz
Max SPL (peak)	132 dB	133 dB
Components	Custom-designed LF 1 x 12" neodymium magnet woofer (3" voice coil) HF 1" neodymium driver (2.4" voice coil, titanium diaphragm) high directivity (80° H x 60° V) wave guide horn	Custom-designed 1 x 15" neodymium magnet woofer (3" voice coil) 1.4" neodymium driver (2.4" voice coil, titanium diaphragm) high directivity (70° H x 50° V) wave guide horn
Built-in power amplifier Total Output Power	2 class-D power units 650 W EIAJ (LF 500 W + HF 150 W)	2 class-D power units 650 W EIAJ (LF 500 W + HF 150 W)
DSP	Montarbo®, 56 bit / 180 MHz; 24 bit converters	Montarbo®, 56 bit / 180 MHz; 24 bit converters
Dimensions (WxHxD)	366 x 590 x 377 mm	436 x 730 x 395 mm
Weight	23 kg	29 kg
Passive versions Power handling Recommended amplifier Dimensions (WxHxD) Weight	Wide12P4: 4 Ω / Wide12P8: 8 Ω 1600 W peak 750 W EIAJ 366 x 590 x 377 mm 24.5 kg	Wide15P4: 4 Ω / Wide15P8: 8 Ω 1600 W peak 750 W EIAJ 436 x 730 x 395 mm 30.8 kg

SPOT SERIES

F000383
SPOT1500

F000390
SPOT2500

SPOT2500

SPOT1500

SPOT1500

SPOT2500



READY TO ROCK JUST HIT THE SPOT

Con la serie **SPOT**, Montarbo® decide di intraprendere la strada votata alla qualità assoluta.

Vanta al proprio interno i migliori componenti *made in Italy* ad oggi rintracciabili sul mercato, la serie nasce con la volontà di regalare emozioni anche a chi spesso e volentieri si ritrova nelle ultime file.

Infatti, grazie alla predominante pressione sonora e ancor di più alla direttività delle trombe, la serie **SPOT** ha la capacità di raggiungere corpose distanze pur rimanendo sempre egregiamente presente lungo la traiettoria del suono riprodotto.

Per non togliere punti a questo emblema della tecnologia, l'esperienza della cinquantenne Montarbo® è riuscita a rendere la serie **SPOT** piuttosto maneggevole, dando la possibilità di ottenere grandi prestazioni ovunque ve ne sia necessità, per coprire le più svariate esigenze.

*With the **SPOT** series, Montarbo® has decided to head out along the route of absolute quality.*

Containing the very best made-in-Italy components available on the market today, the series has been created in the desire to give rise to emotions, even for those who are often right in the back rows.

*The predominant sound pressure and even more so the directional horns allow the **SPOT** series to reach long distances whilst still remaining perfectly present all along the trajectory of the sound reproduced.*

*To keep this emblem of the technology deservedly at the top, the experience of the fifty-year-old Montarbo® has successfully managed to make the **SPOT** series fairly easy to handle, enabling great performance wherever it is needed, in order to fulfil the most demanding customers.*

I tecnici Montarbo® ne suggeriscono le seguenti applicazioni:
Montarbo® technicians suggest the following applications:



ACCESSORIES SPOT1500: LD2.4 (p.74) · SPOT2500: LD2.4 (p.74), CV-SPOT (p.77)

SPECIFICATIONS	SPOT 1500 - 2-way active bi-amplified	SPOT 2500 - 'quasi 3-way' active tri-amplified
Frequency response	45 ÷ 20.000 Hz	40 ÷ 20.000 Hz
Max SPL (peak)	135 dB	140 dB
Components full range cabinet LF HF	Custom-designed 1 x 15" neodymium magnet woofer (4" voice coil) 1.4" neodymium driver (3" voice coil, titanium diaphragm)	Custom-designed 1 x 15" neodymium magnet woofer (4" voice coil) 1.4" neodymium driver (3" voice coil, titanium diaphragm)
Bass cabinet	high directivity (50° H x 40° V) wave guide horn ...	high directivity (50° H x 40° V) wave guide horn 1 x 15" neodymium magnet woofer (4" voice coil)
Built-in power amplifier Total Output Power	2 class-D power units 1500 W EIAJ (LF 1000 W; HF 500 W)	3 class-D power units 2500 W EIAJ (LF 2 x 1000 W + HF 500 W)
DSP	Montarbo®; 56 bit / 180 MHz; 24 bit converters	Montarbo®; 56 bit / 180 MHz; 24 bit converters
Dimensions (WxHxD)	440 x 775 x 492 mm	Full range cabinet: 440 x 775 x 492 mm Bass cabinet: 440 x 775 x 492 mm
Weight	35 kg	Full range cabinet: 35.8 kg Bass cabinet: 27.7 kg

W SERIES

F000324
W18As

F000374
W24As

F000343
W28As



W18As

W24As

W28As



SINCE MONTARBO® GETS ANGRY

Se far "urlare" le casse acustiche è quello che vi diverte, allora la serie **W** è quella che fa al caso vostro. Una serie che non ammette orecchi fini, determinata a far divertire gli amanti dei volumi elevatissimi, pur senza rinunciare alla qualità.

Apprezzata sul mercato per diversi anni, questa linea di casse acustiche è ancora oggi in grado di soddisfare quella fetta di mercato rappresentata da coloro che hanno intrapreso la filosofia "meglio un dB in più che uno in meno" e per questo soddisfatti di ciò che è in grado di sprigionare questo prodotto.

Sia in versione singola sia a doppio woofer, la serie **W** spalanca le porte dei medio-alti a coloro che la scelgono, ruggendo a livelli di pressione sonora da vera combattente per soddisfare le esigenze più estreme di potenza e qualità.

*If what you really like is to have your speakers "shouting" at you, then the **W** series is simply perfect. A series that will not allow for fine ears, determined to give lovers of extremely loud volumes exactly what they want, without renouncing quality.*

Much appreciated on the market for several years now, this line of loudspeakers still today reflects the desires of the market taking the view that "it is better to have a dB more rather than less", and who are therefore over the moon when hearing just what this product has to unleash.

*In both its single and double woofer versions, the **W** series throws back the doors of the medium-high range for those choosing it, growling out sound pressure of true combatants to satisfy the most extreme demands in terms of power and quality.*

I tecnici Montarbo® ne suggeriscono le seguenti applicazioni:
Montarbo® technicians suggest the following applications:



SPECIFICATIONS	W18As - 2-way active bi-amplified	W24As - 2-way active bi-amplified	W28As - 2-way active bi-amplified
Frequency response	40 Hz ÷ 20 kHz ± 3 dB	50 Hz ÷ 20 kHz ± 3 dB	45 Hz ÷ 20 kHz ± 3 dB
Max SPL	131 dB	134 dB	137 dB
Components			
LF	Custom-designed 18" high efficiency woofer (3" voice coil)	Custom-designed 2 x 12" neodymium magnet, high efficiency woofers (3" voice coil)	Custom-designed 2 x 15" neodymium magnet, high efficiency woofers (3" voice coil)
HF	2" driver (3" voice coil, titanium diaphragm) constant directivity horn (90°H x 60°V)	2" neodymium driver (3" voice coil, titanium diaphragm) constant directivity horn (60°H x 40°V)	2" neodymium driver (4" voice coil, titanium diaphragm) constant directivity horn (60°H x 40°V)
Built-in power amplifier	2 class-AB, MosFet, dedicated power units	2 class-AB, MosFet, dedicated power units	2 class-AB, MosFet, dedicated power units
Total Output Power	850 W (LF 600 W + HF 250 W)	1050 W (LF 800 W + HF 250 W)	1200 W (LF 900 W + HF 300 W)
Dimensions (WxHxD)	540 x 870 x 450 mm	414 x 943 x 368 mm	480 x 1096 x 400 mm
Weight	59 kg	42.5 kg	52.7 kg

W SERIES

F000330
W17As

F000319
W17P

F000446
W440A

F000313
W440P



W17As



W440A

W17As / W17P

W440A / W440P



THE ONE WAY TO HAVE ALL THE FIVE W'S ANSWERED

L'unica cassa acustica ad avere una scocca unica ultra resistente anche per coloro che vogliono ascoltare buona musica durante l'apocalisse.

Compatta, versatile, leggera e di facile installazione, la serie è corredata di grande potenza e impatto sonoro, vincente su ogni punto di discussione, apprezzata e richiesta in numeri esorbitanti in tutto il mondo grazie alla sua famosa resistenza alle intemperie.

Questa linea di casse acustiche è stata progettata, infatti, per resistere e durare nel tempo, senza perdere nel campo dell'affidabilità e della qualità sonora; un prodotto studiato in maniera vincente da Montarbo®, per soddisfare le esigenze nelle situazioni più difficili, dove le condizioni atmosferiche richiedono alte prestazioni e durezza.

The only loudspeaker to have an ultra-resistant single shell for those wishing to listen to good music, even during the apocalypse.

Compact, versatile, light and easy to install, the series comes with great power and sound impact, winning out on all points for discussion and popular and in demand in exorbitant numbers all over the world, thanks to its famous capacity to withstand even the worst weather conditions. This line of loudspeakers has in fact been designed to withstand and hold out over time, without losing its reliability and sound quality; this product has been successfully designed by Montarbo® to meet the demands of the most difficult situations, specifically with difficult weather conditions, where long-lasting resistance and high-tech performances are necessary.

I tecnici Montarbo® ne suggeriscono le seguenti applicazioni:
Montarbo® technicians suggest the following applications:

CLUB	CAFÉ	WEATHER
W440A W440P W17P	W440A W440P	W440A W440P W17P W17As

SPECIFICATIONS	W17As - 2-way active bi-amplified	W440A - 2-way active bi-amplified
Frequency response	40 Hz ÷ 20 kHz ± 3 dB	45 Hz ÷ 20 kHz ± 3 dB
Max SPL	130 dB	128 dB
Components	Custom-designed	Custom-designed
LF	15" neodymium magnet woofer (3" voice coil)	12" neodymium magnet woofer (2.5" voice coil)
HF	1.4" driver (2.5" voice coil, titanium diaphragm) constant directivity horn (60°H x 40°V)	1" driver (2" voice coil) constant directivity horn (90°H x 70°V)
Built-in power amplifier	2 class-AB, MosFet, dedicated power units	2 class-AB, MosFet, dedicated power units
Total Output Power	600 W (LF 450 W + HF 150 W)	400 W (LF 300 W + HF 100 W)
Dimensions (WxHxD)	480 x 740 x 405 mm	400 x 650 x 355 mm
Weight	32 kg	18.5 kg
Passive versions	W17P: 600 W / 8 Ω	W440P: 400 W / 8 Ω
Dimensions (WxHxD)	480 x 740 x 405 mm	400 x 650 x 355 mm
Weight	25 kg	14.5 kg

NM SERIES

F000436
NM250A

F000304
NM250P

NM250A



NM250P

NM250A / NM250P



SMALL SPEAKERS BIG LEADERS

Provate a bendarvi gli occhi, sedetevi di fronte ad una **NM250** e ascoltate ciò che questo piccolo grande successo di casa Montarbo® è in grado di fare. Il risultato è ancor più stupefacente quando, tolta la benda, vi rendete conto che ciò che si è ascoltato proviene da un così piccolo prodotto che pochi concorrenti sono in grado di eguagliare sul mercato, utilizzando gli stessi materiali.

Magia? Illusionismo? Niente di tutto ciò. Solo un perfetto connubio fra passione, professionalità ed esperienza, un mix che Montarbo® è stata in grado di creare per dar vita a questo progetto ad alta efficienza.

La **NM250**, sia in versione attiva sia passiva, fornisce risultati musicali stupefacenti nella massima compattezza e comodità d'impiego, con potenza e pressione sonora tipiche dei sistemi professionali di peso e dimensioni superiori.

*Try to blindfold yourself, sit in front of an **NM250** and listen to just what this little great Montarbo® success can really do.*

The result is even more incredible when, upon removing the blindfold, you realise that what you are listening to comes from such a small product that only very few competitors can equal on the market today, using the same materials.

Magic? Illusion? Nothing of the sort. Simply a perfect blend of passion, professionalism and experience, a mix that Montarbo® has successfully created to give rise to this high-efficiency project.

*The **NM250**, in both its active and passive versions, yields incredible musical results in an absolutely compact, convenient design with sound pressure and power typical of professional systems weighing and measuring far more.*

**I tecnici Montarbo® ne suggeriscono le seguenti applicazioni:
Montarbo® technicians suggest the following applications:**



ACCESSORIES NM250A · NM250P: ST250P (p.77)

SPECIFICATIONS	NM250A - 2-way active bi-amplified
Frequency response	58 Hz ÷ 20 kHz ± 2 dB
Max SPL	121 dB
Components	Custom-designed
LF	8" wide excursion woofer (2" voice coil)
HF	1" compression driver (1" voice coil) constant directivity horn (90°H x 60°V)
Built-in power amplifier Total Output Power	2 class-AB, MosFet, dedicated power units 250 W (LF 200 W + HF 50 W)
Dimensions (WxHxD)	250 x 425 x 230 mm
Weight	9 kg
Passive versions	NM250P: 200 W / 8 Ω
Dimensions (WxHxD)	250 x 425 x 230 mm
Weight	7 kg

TANK SERIES

F000433
TANK201A

F000272
TANK201P

F000431
TANK20SA

F000270
TANK20SP

F000434
TANK241A

F000273
TANK241P

F000432
TANK24SA

F000271
TANK24SP



TANK241A

TANK201A

TANK24SA

TANK20SA

EVERY BATTLE SHOULD BE FOUGHT INSIDE A TANK

Se la pazienza nel gestire e utilizzare sistemi audio vi ha abbandonato col passare del tempo, Montarbo® ha in serbo per voi la serie **TANK**, un prodotto di grande efficienza nella massima semplicità d'utilizzo.

La serie fa fede all'elevata pressione sonora tipica del *made in Italy* Montarbo®, miscelata alla capacità di rendere accessibile a chiunque l'interazione con la tecnologia del prodotto.

La leggerezza e la compattezza del cabinet rendono questo sistema molto versatile e danno la possibilità, ad esempio, di installarlo su palchi teatrali con il risultato di minima invadenza visiva con la massima efficienza sonora.

*If the patience needed to manage and use audio systems has abandoned you with the passing of time, Montarbo® is pleased to present you with the **TANK** series: a highly efficient product in an ultra easy-to-use design.*

The series is true to the high sound pressure typical of Montarbo® made in Italy, combined with the capacity to make interaction with the product technology possible to everyone.

The light, compact cabinet design make it a very versatile system indeed, enabling its installation, for example, on theatre stages with minimal visual invasiveness and maximum sound efficiency.

I tecnici Montarbo® ne suggeriscono le seguenti applicazioni:
Montarbo® technicians suggest the following applications:



ACCESSORIES TANK20SA · TANK20SP · TANK24SA · TANK24SP: S/203 (p.77)

SPECIFICATIONS	TANK201A - 2-way active	TANK20SA active subwoofer	TANK241A - 2-way active	TANK24SA active subwoofer
Frequency response	60 Hz ÷ 20 kHz ± 2 dB	50 Hz ÷ 100 Hz	45 Hz ÷ 20 kHz ± 2 dB	40 Hz ÷ 100 Hz
Max SPL	127 dB	127 dB	129 dB	129 dB
Components	LF Custom-designed 2 x 10" neodymium magnet woofers (2.5" voice coil) HF 1" driver (1.4" voice coil), loaded by a 80° x 60° horn	Custom-designed 2 x 10" neodymium magnet woofers (2.5" voice coil) ...	Custom-designed 2 x 12" neodymium magnet woofers (2.5" voice coil) 1" driver (1.4" voice coil), loaded by a 80° x 60° horn	Custom-designed 2 x 12" neodymium magnet woofers (2.5" voice coil) ...
Stereo electronic x-over	...	100 Hz, 12/24 dB/oct phase reversal switch	...	100 Hz, 12/24 dB/oct phase reversal switch
Built-in power amplifier	class-D power unit; SMPS; protected against overload, over temperature, short circuit 500 W EIAJ	class-D power unit; SMPS; protected against overload, over temperature, short circuit 500 W EIAJ	class-D power unit; SMPS; protected against overload, over temperature, short circuit 500 W EIAJ	class-D power unit; SMPS; protected against overload, over temperature, short circuit 500 W EIAJ
Total Output Power	500 W EIAJ	500 W EIAJ	500 W EIAJ	500 W EIAJ
Dimensions (WxHxD)	325 x 734 x 340 mm	325 x 734 x 340 mm	360 x 830 x 500 mm	360 x 830 x 500 mm
Weight	23 kg	21 kg	26.5 kg	25.5 kg
Passive versions	TANK201P	TANK20SP passive subwoofer	TANK241P	TANK24SP passive subwoofer
Nominal power	500 W AES	500 W AES	500 W AES	500 W AES
Power handling	1000 W peak	1000 W peak	1000 W peak	1000 W peak
Recommended amplifier	750 W EIAJ	750 W EIAJ	750 W EIAJ	750 W EIAJ
Dimensions (WxHxD)	325 x 734 x 340 mm	325 x 734 x 340 mm	360 x 830 x 500 mm	360 x 830 x 500 mm
Weight	21 kg	20 kg	25.5 kg	25 kg

TANK201A / TANK201P

TANK20SA / TANK20SP

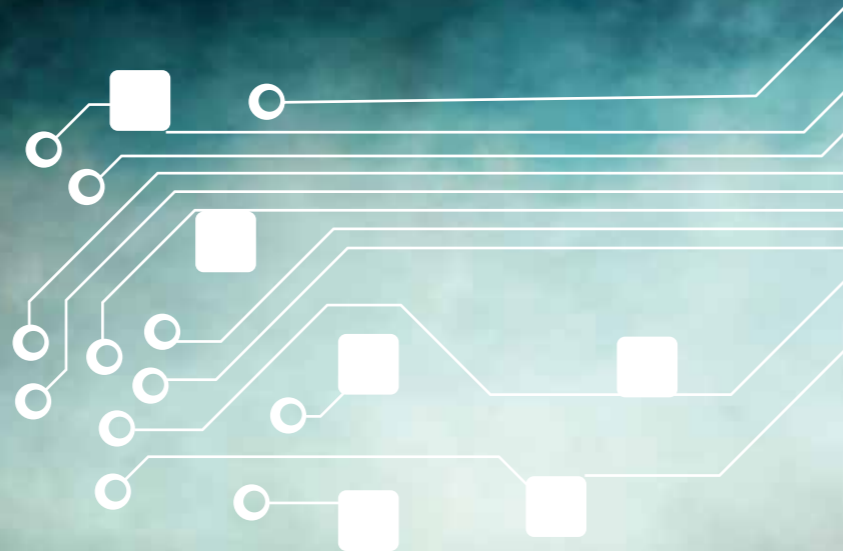
TANK241A / TANK241P

TANK24SA / TANK24SP



TANK SERIES

F000430
TANK12SA



TANK12SA



TANK12SA



GOTTA LISTEN TO A FULL TANK OF PURE BASS

Questo piccolo bass-cabinet, così come gli altri prodotti di casa Montarbo® di dimensioni più contenute, fa riempire d'orgoglio gli appassionati dell'efficienza ridotta ai minimi termini.

Il **TANK12As** infatti, con la sua timbrica nitida e lineare e la capacità di sfruttare al massimo la sua amplificazione interna e la qualità sonora che ne emerge prende posizione sul mercato come prodotto più che temibile anche per diversi concorrenti di potenza e dimensione maggiore.

Per non togliere nulla al caso, l'estrema compattezza e leggerezza di questo cabinet, allo stesso tempo molto robusto, rendono questo subwoofer una pietra preziosa fra i prodotti di questa fascia di prezzo, andando ad onorare quei piccoli grandi apparecchi utili per tutti coloro che non necessitano di riempire spazi molto considerevoli.

I tecnici Montarbo® ne suggeriscono le seguenti applicazioni:
Montarbo® technicians suggest the following applications:



This little bass cabinet, just as the other more compact Montarbo® products, makes those passionate about absolute efficiency truly proud of their purchase.

*The **TANK12As**, in fact, with its clear, linear timbre and capacity to exploit its internal amplification and the sound quality that emerges to the full, allow it to take an excellent market position as a product that is very much feared even by competitors of greater power and dimensions.*

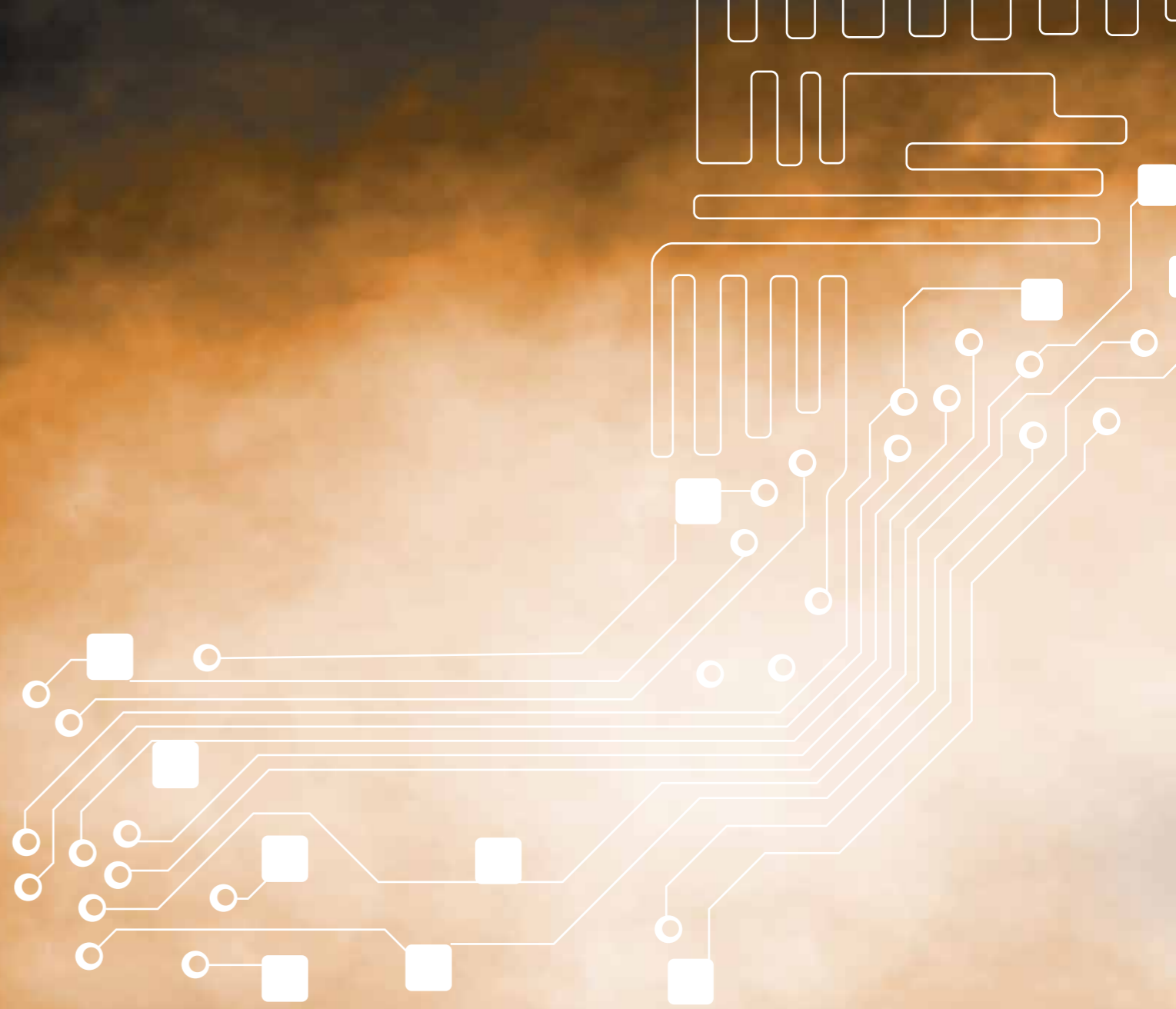
Leaving nothing to chance, the extremely compact, light design flaunted by this cabinet is at the same time extremely hard-wearing, making this subwoofer a precious jewel amongst products of this price range, honouring the small great equipment that is so useful for all those not needing to fill very large spaces.

ACCESSORIES TANK12SA: S/203 (p.77)

SPECIFICATIONS TANK12SA - active subwoofer

Frequency response	45 Hz ÷ 100 kHz
Max SPL	127 dB
Components	Custom-designed
LF	12" neodymium magnet woofer (3" voice coil)
Stereo electronic x-over	100 Hz, 24 dB/oct
Built-in amplifiers	class-D power unit; SMPS; protected against overload, over temperature, short circuit
Total Output Power	500 W EIAJ
Dimensions (WxHxD)	512 x 360 x 435 mm
Weight	17 kg

**SUBWOOFERS
SUB-STANTIAL
NEED TO WOOF**



EARTH SERIES

F000500
EARTH118

F000501
EARTH212

F000502
EARTH218

EARTH218

EARTH212

EARTH118

EARTH118

kg W
39 1500

EARTH212

kg W
33 1500

EARTH218

kg W
56 3400

TRY TO LISTEN TO YOUR EARTH BEAT

Ultima linea - solo per età - di subwoofer di casa Montarbo®, la serie **EARTH** si distingue dalle altre concorrenti per l'estrema efficienza espressa in un cabinet molto ridotto. Dalla versione più piccola che è in grado di tener testa ai cugini di dimensioni più grandi, alla versione più grande in grado di soddisfare le richieste più particolari, questi subwoofer di nuova generazione garantiscono una qualità acustica inconfondibile, con una pressione sonora invidiabile per le dimensioni di cui dispongono.

In altre parole, se volete un subwoofer che vi dia la possibilità di far tremare le pareti del vostro locale senza ingombrare o essere troppo invadente, allora questo è ciò che vi serve.

Lo studio ottenuto di fluidodinamica per la costruzione del cabinet in betulla molto ridotto, e il peso sotto la media della concorrenza, rendono questo prodotto molto versatile, dandovi la possibilità di utilizzarlo sia sul palco per le band, oppure per serate di DJ set nei vostri club preferiti.

*The latest line - but only in terms of age - of Montarbo® subwoofers is the **EARTH** series, which stands out from its competitors for the extreme efficiency expressed in such a small cabinet. From the smallest version, which can easily run head-to-head against its larger cousins, to the largest version able to satisfy even the most specific demands, these new generation subwoofers guarantee unmistakable audio quality with enviable sound pressure for the dimensions available. In other words, if you are looking for a subwoofer that will have the walls of your venue shaking, yet without being overly invasive or cumbersome, search no further.*

The study obtained of fluid dynamics for the construction of the highly compact birch cabinet and the weight which falls well below our competition's average, make this product highly versatile and enable it to be used both on the stage for bands or for DJ set evenings in our favourite clubs.

I tecnici Montarbo® ne suggeriscono le seguenti applicazioni:
Montarbo® technicians suggest the following applications:



ACCESSORIES EARTH218: LD2.4 (p.74)

SPECIFICATIONS	EARTH118	EARTH212	EARTH218
Enclosure	bass-reflex	bass-reflex	bass-reflex
Frequency response	38 ÷ 100 Hz	40 ÷ 100 Hz	35 ÷ 100 Hz
Continuous SPL	135 dB	135 dB	139 dB
Electronic cross-over	100 Hz	100 Hz	100 Hz
Components	18" ferrite woofer with 4" voice coil Custom-designed	2 x 12" neodymium woofer with 3" voice coil Custom-designed	2 x 18" neodymium ferrite woofers with 4" voice coil. Custom-designed
Built-in amplifier	class-D power units, 1500 W EIAJ	class-D power units, 1500 W EIAJ	class-D power units, 3400 W EIAJ
Built-in DSP	Montarbo®, 24 bit conv.
Management functions	Filtering, EQ, delay, limiting, diagnostic, 5 presets, 1 of which custom-programmable, remote control by PC by means of USB interface, LD2.4 (optional device)
Connections and controls	Line input (balanced XLR) Volume control Line link Xover Out LowPassFilter Different order selection Polarity selection (balanced XLR)	Line input (balanced XLR) Volume control Line link Xover Out LowPassFilter Different order selection Polarity selection (balanced XLR)	Line input (balanced XLR) Volume control Line link Xover Out (balanced XLR) In-out remote control (RJ45) Preset select switch Status LED indicators (on, signal, clipping, thermal warning protection, number preset)
Construction	Birch plywood coated with high-impact and chip resistant paint 2 mm steel protection grille with foam	Birch plywood, coated with high-impact and chip resistant paint 2mm steel protection grille with foam	Birch plywood coated with high-impact and chip resistant paint 2 mm steel protection grille with foam
Fittings	Carrying handle	Carrying handle	Carrying handle
Dimensions (WxHxD)	506 x 536 x 580 mm	512 x 735 x 457 mm	994 x 506 x 580 mm
Weight	39 kg	33 kg	56 kg

BX SERIES

F000366
BX151A

F000367
BX152A

F000368
BX181A

F000369
BX182A



BX151A

BX152A

BX181A

BX182A

kg W

38

500

kg W

63

1200

kg W

48

1000

kg W

85

2300

MUCH LOUDER THAN THE WAY IT'S LOWER

Grandi prestazioni in un cabinet estremamente compatto; è la storica linea **BX** della Montarbo®, che è stata in grado di conquistare il cuore degli affezionati del settore.

La sua linea semplice ed elegante racchiude in sé un'altissima qualità dei componenti e dei materiali utilizzati per darle vita, con tecniche di progettazione al passo con l'avanguardia della tecnologia.

La linea **BX** vanta una grande versatilità, permettendo di soddisfare gli usi e i gusti più differenziati, dalla musica tecno più aggressiva sin alla grande raffinatezza del jazz.

Uso interno e all'aperto.

*High performance in an extremely compact cabinet; this is the historic Montarbo® **BX** line, which has successfully conquered the heart of sector aficionados.*

Its simple, elegant line encompasses extremely high quality components and materials used to bring it to life, with design techniques that are in step with high cutting-edge technology.

*The **BX** line is extremely versatile, satisfying the most differentiated uses and tastes, from extreme-aggressive tecno to highly-refined jazz.*

It can be used both indoors and outdoors.

I tecnici Montarbo® ne suggeriscono le seguenti applicazioni:
Montarbo® technicians suggest the following applications:

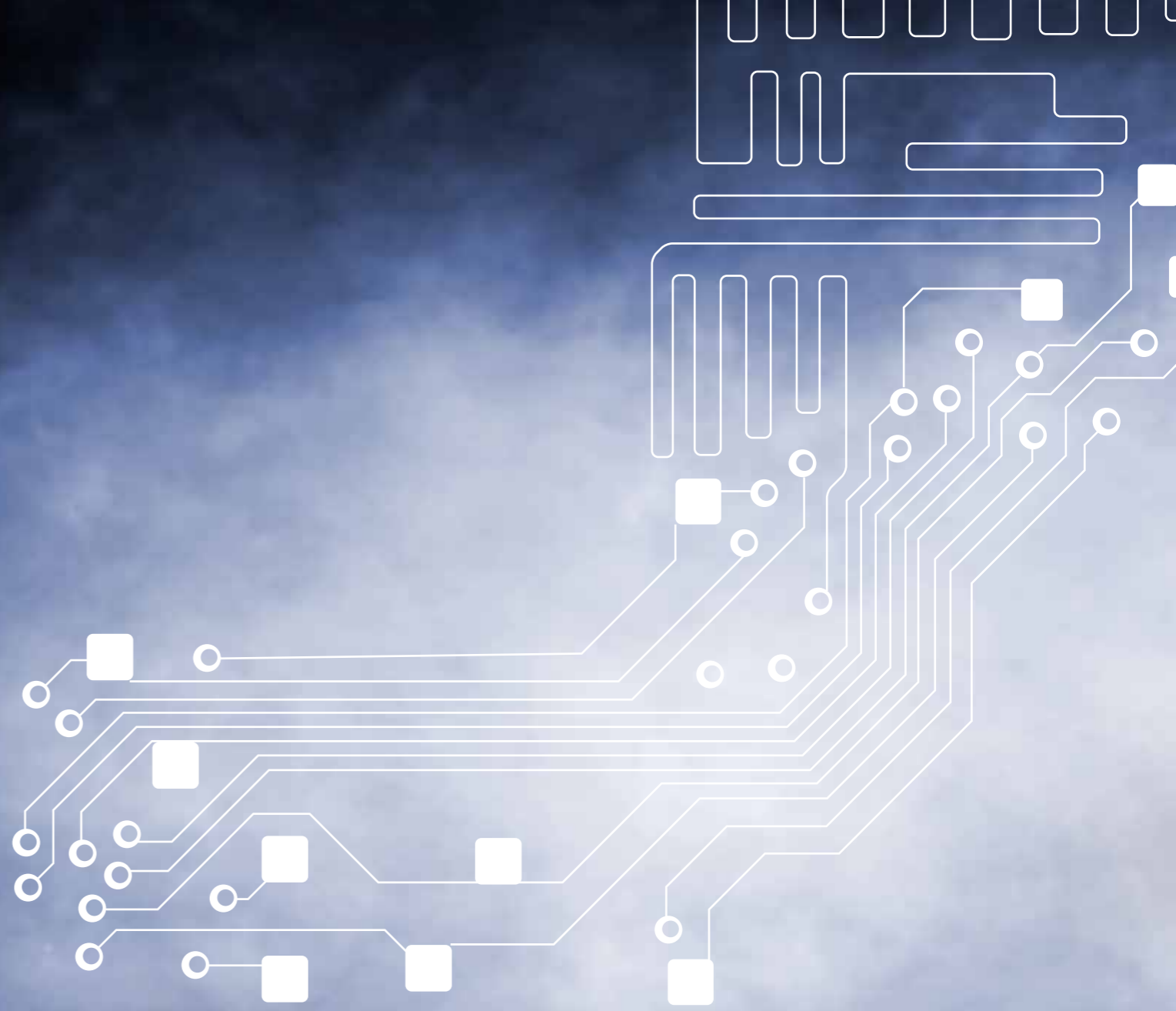


BX152A BX151A BX151A BX151A
BX182A BX152A BX181A

ACCESSORIES BX151A: S/203 (p.77)

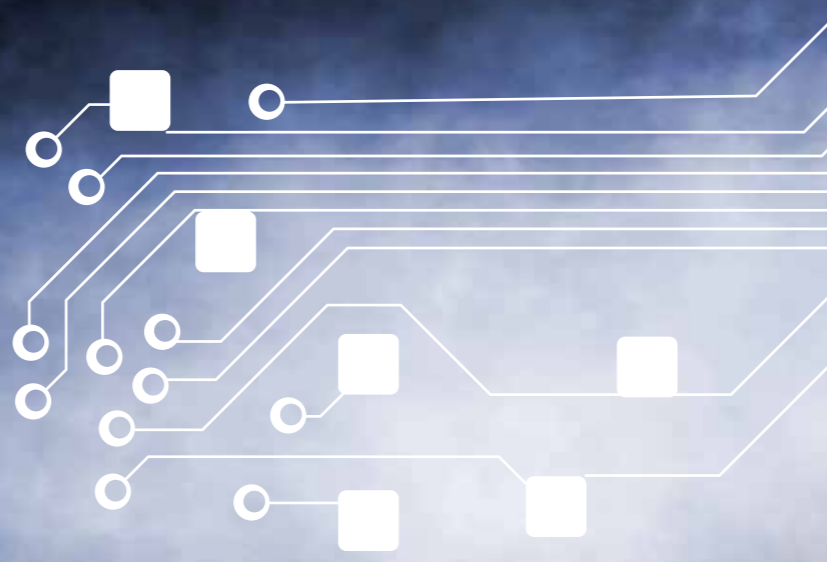
SPECIFICATIONS	BX151A - active	BX152A - active	BX181A - active	BX182A - active bi-amplified
Frequency response	36 Hz ÷ 100 Hz (-3 dB)	34 Hz ÷ 100 Hz (-3 dB)	32 Hz ÷ 100 Hz (-3 dB)	30 Hz ÷ 100 Hz (-3 dB)
Max SPL (half space)	127 dB	134 dB	132 dB	139 dB
Components	15" neodymium magnet woofer (3" voice coil)	2 x 15" neodymium magnet woofers (4" voice coil)	18" neodymium magnet woofer (4" voice coil)	2 x 18" neodymium magnet woofers (4" voice coil)
Stereo electronic x-over	100 Hz, 24 dB/oct Linkwitz-Riley	100 Hz, 24 dB/oct Linkwitz-Riley	100 Hz, 24 dB/oct Linkwitz-Riley	100 Hz, 24 dB/oct Linkwitz-Riley
Built-in power amplifier	1 class-AB, MosFet, dedicated power unit Dynamic EQ Controller (D.E.Co.)	1 class-AB, MosFet, dedicated power unit Dynamic EQ Controller (D.E.Co.)	1 class-AB, MosFet, dedicated power unit Dynamic EQ Controller (D.E.Co.)	2 class-AB, MosFet, dedicated power units Dynamic EQ Controller (D.E.Co.)
Total Output Power	500 W	1200 W	1000 W	2300 W (2 x 1150 W)
Dimensions (WxHxD)	500 x 580 x 470 mm	940 x 570 x 490 mm	540 x 650 x 600 mm	1050 x 640 x 740 mm
Weight	38 kg	63 kg	45 kg	85 kg

**STAGE
MONITORS
THE FAITHFUL
MATES**



FLOOR SERIES

- F000452 F12BiDx
- F000451 F12BiSx
- F000448 F12P4Dx
- F000447 F12P4Sx
- F000450 F12P8Dx
- F000449 F12P8Sx
- F000457 F15P4Dx
- F000456 F15P4Sx
- F000459 F15P8Dx
- F000458 F15P8Sx



FLOOR12BiSx

FLOOR12PSx

FROM THE FLOOR TO THE PEOPLE

Gli artisti, si sa, ci sanno regalare sempre grandi emozioni; per coloro che rendono possibile la piena riuscita durante i Live non è sempre così facile accontentare ogni necessità in sede di sound-check. Ad oggi Montarbo® risolve il problema con le **FLOOR**, la serie con la più vasta gamma di monitor mai realizzata: destro, sinistro, coassiale, biamplificato, da 12", da 15", attivo, passivo da 4 e da 8 Ω; serve altro?

Questa serie, oltre ad avere la più ampia possibilità di scelta racchiusa in un design compatto ed elegante, è in grado di offrire una qualità del suono da vere Front of House, grazie ai componenti interni *made in Italy* ricercati e di tecnologia avanguardistica.

Dulcis in fundo, non poteva mancare la robustezza e l'affidabilità dei materiali Montarbo® utilizzati per questo item, che permetteranno ai cantanti più eccentrici di poter salire sui monitor **FLOOR** e raccogliere le ovazioni del pubblico, dando sfogo alla loro inconfondibile creatività artistica.

*Artists, of course, always convey great emotions; for those that make a complete success possible when live, it is not always quite as easy to make them happy during a sound-check. Today Montarbo® solves the problem with **FLOOR**, the series with the largest range of monitors ever developed: right, left, coaxial, bi-amplified, from 12" to 15", active, passive, 4 and 8 Ω; need anything else?*

This series not only offers the largest possible range of choice enclosed in an elegant, compact design, but is also able to offer true front-of-house sound quality, thanks to the made in Italy sought-after interior components and cutting-edge technology.

*Last but not least, of course, the hard-wearing, reliable Montarbo® materials used for this item enable the more eccentric singers to even get on top of the **FLOOR** monitors to uphold the public's ovations, giving their unmistakable artistic creativity free reign.*

I tecnici Montarbo® ne suggeriscono le seguenti applicazioni:
Montarbo® technicians suggest the following applications:



SPECIFICATIONS	F12Bi	F12P	F15P
Available versions	8 Ω LF + 16 Ω HF with right and left versions	4 Ω and 8 Ω with right and left versions	4 Ω and 8 Ω with right and left versions
Woofer	12" neodymium magnet, 4" voice coil	12" woofer featuring a new-geometry neodymium magnetic circuit with flux demodulating rings, weatherproof cone, large excursion 3" ventilated voice coil, variable-geometry cone surround and centering spider	15" woofer featuring a new-geometry neodymium magnetic circuit with flux demodulating rings, weatherproof cone, large excursion 3" ventilated voice coil, variable-geometry cone surround and centering spider
Driver	1.4" throat, 3" voice coil, neodymium magnet, nitrided titanium diaphragm	1" throat, 2.5" voice coil, neodymium magnet, titanium diaphragm	1" throat, 2.5" voice coil, neodymium magnet, titanium diaphragm
Horn	Rotatable 80° x 60° wave guide	80° x 60° wave guide	Rotatable 80° x 60° wave guide
Filter	...	Second-order Bessel type crossover, without resonant cells, with protection against HF driver overload	built-in passive
Max SPL	131 dB	130 dB	132 dB
Nominal power	800 + 100 W AES - 1600 + 200 W continuous program	400 W AES - 750 W continuous program	400 W AES - 750 W continuous program
Ideal combination with	PLM6800	PLM3000	PLM3000
Only use with	PLM6800 (or LM24) dedicated preset
Cabinet	Multiply birch, curved profile, anti-scratch surface coating	Multiply birch, curved profile, anti-scratch surface coating	Multiply birch, curved profile, anti-scratch surface coating
Dimensions (WxHxD)	660 x 300 x 490 mm	600 x 300 x 490 mm	740 x 370 x 580 mm
Weight	23.5 kg	21 kg	26 kg
Suggested applications	Voice, guitar, keyboard, percussions, bass, drums	Voice, guitar, keyboard, percussions	Voice, percussions, bass, drums

FLOOR SERIES

F000453
F15CxA

F000454
F15CxP



F15CxP



F15CxA

WAITING FOR THE HONEYS DANCE ON THE FLOOR

Oltre ai modelli asimmetrici appartengono alla serie i modelli **F15Cx** e **F15CxBi** entrambi equipaggiati di un woofer da 15" coassiale la cui tromba ha una dispersione di 40° x 60°. **F15CxBi** è stato progettato per l'utilizzo in bi-amplificazione accoppiato al processore amplificato **PLM6800**. La robustezza del cabinet, dal profilo curvo e costruito con un unico foglio di multistrato di 16 mm, rende questi monitor estremamente robusti ed adatti al touring.

La speciale finitura antigraffio ne aumenta la resistenza e la protezione nell'uso intenso. La maniglia, scolpita interamente nel legno, permette una presa solida e sicura a 270° e contiene, proteggendole e minimizzandone l'ingombro, le connessioni Speakon® presenti su entrambi i lati della cassa. In aggiunta ai tradizionali piedini di appoggio due piedini regolabili permettono al fonico di ottimizzare l'angolo tra monitor e palco per una copertura in verticale controllabile in ogni situazione e per un disaccoppiamento meccanico tra box e palco, utile al controllo dei larsen in bassa frequenza.

*Other than the asymmetrical models, the series also includes the **F15Cx** and **F15CxBi** models, both equipped with a 15" coaxial speaker fitted with a 40° by 60° horn. Model **F15CxBi** has been designed for bi-amping and is driven by a **PLM6800** powered processor. These monitors are extremely sturdy and suitable for touring thanks to the well-built cabinet with its curved profile which is made possible by a single piece of 16 mm multiply board. The special anti-scratch surface coating increases resistance and protection even under conditions of hard use. The handles, recesses carved right into the speaker body itself, allow for a solid and reliable 270° grip; these strategically placed cavities also house the Speakon® connectors (installed on both sides of the cabinet), thus reducing the cabinet's bulk and providing greater protection for the connectors. In addition to the standard rubber feet, two adjustable feet optimize the angle between the monitors and the stage floor, thus allowing for better control of vertical directivity and mechanical decoupling from the stage floor, in order to control low frequency feedback.*

I tecnici Montarbo® ne suggeriscono le seguenti applicazioni:
Montarbo® technicians suggest the following applications:



SPECIFICATIONS	F15CxA	F15CxP
Enclosure	2-way bass-reflex	...
Frequency response	40 ÷ 20.000 Hz	...
Impedance	...	8 Ω
SPL	128 dB (continuous)	131 dB (max)
Components	Custom-designed	Custom-designed
Woofer	1 x 12" woofer (4" voice coil)	15", 3" voice coil
Driver	1 x compression driver (1.4" throat, 3" voice coil)	3" voice coil
Horn	Constant directivity horn (80° H x 60° V)	Coaxial horn (60° H x 40° V)
Electronic cross-over	800 Hz	...
Amplifier	2 class-D power units (built-in)	Ideal combination with PLM3000
Power	LF: 1500 W EIAJ HF: 500 W EIAJ	400 W AES 750 W continuous program
Built-in DSP	Montarbo®, 24bit conv.	...
Filters	FIR filters	Built-in passive
Connections and controls	Line input (balanced XLR) with Volume control Line link Digital input, Digital link (balanced XLR) In-out remote control (RJ45) Switchable analog/digital input, Preset select switch Status LED indicators (on, signal, clipping, thermal warning protection, number preset, analog/digital input)	...
Cabinet	Multiply birch, curved profile, anti-scratch surface coating	Multiply birch, curved profile
Dimensions (WxHxD)	630 x 370 x 580 mm	630 x 370 x 580 mm
Weight	23.5 kg	22 kg
Suggested applications	Voice, guitar, keyboard, percussions, bass	Voice, guitar, keyboard, percussions, bass

M SERIES

F000422
M11A

F000423
M22A



M22A



M11A

WHAT WOULD MONTARBO® BE WITHOUT M?

La serie **M** rappresenta la storia dei monitor *made in Italy*: hanno suonato su svariati palchi che i veterani ricorderanno con piacere, restando ancora oggi un prodotto di ottima qualità in rapporto al suo prezzo.

La loro semplicità e la qualità dei componenti interni, rendono questo prodotto storico della Montarbo® un punto di partenza da cui si cerca, oggi, di carpirne i punti chiave e raccoglierne l'ispirazione per creare i monitor del futuro.

Il driver che ha rappresentato per anni l'alta qualità rende tutt'oggi la serie **M** un prodotto più che efficiente.

*The **M** series represents the history of made-in-Italy monitors: they have played on various stages that veterans will take pleasure in recalling, and still today remain an excellent quality product and great value for money.*

The simplicity and quality of the internal components make this product a historic feature of Montarbo® and a starting point from which we today seek to glean the essential elements and take our inspiration to create the monitors of the future.

*The driver that for years has represented high quality, means that the **M** series remains a highly efficient product even today.*

I tecnici Montarbo® ne suggeriscono le seguenti applicazioni:
Montarbo® technicians suggest the following applications:



SPECIFICATIONS

M11A - 2-way active

M22A - 2-way active bi-amplified

Frequency response

50 Hz ÷ 20 kHz ± 3 dB

45 Hz ÷ 20 kHz ± 3 dB

Max SPL

124 dB

127 dB

Components

LF

Custom-designed
10" high efficiency woofer
(2" voice coil)

Custom-designed
10" high efficiency neodymium magnet woofer
(2.5" voice coil)

HF

1" compression driver (2" voice coil)
constant directivity horn (90°H x 70°V)

1" compression driver (2" voice coil)
constant directivity horn (90°H x 70°V)

Built-in power amplifiers Total Output Power

1 class-AB, MosFet, dedicated power unit
180 W

2 class-AB, MosFet, dedicated power units
300 W (LF 200 W + HF 100 W)

Dimensions (WxHxD)

310 x 374 x 505 mm

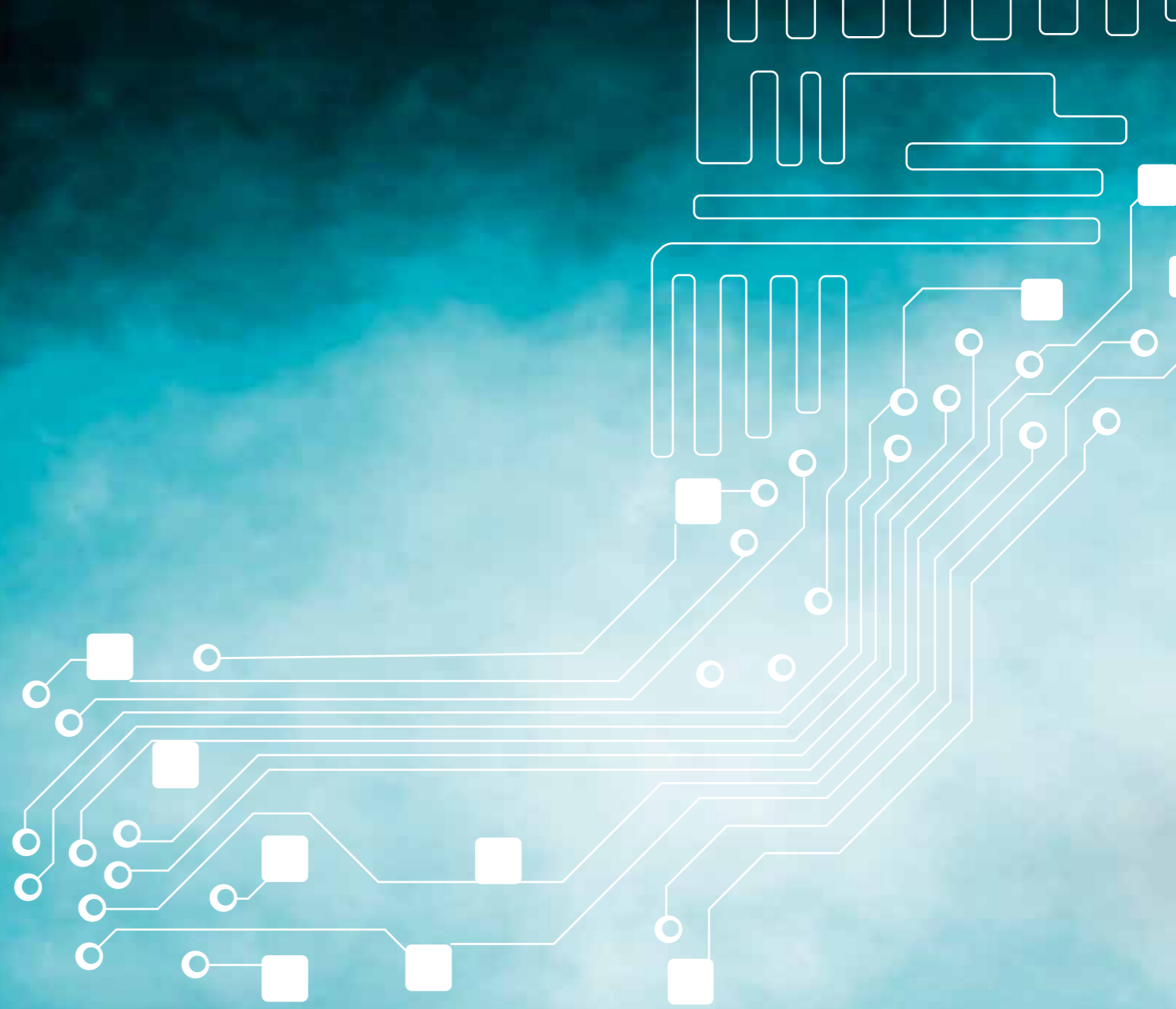
494 x 270 x 429 mm

Weight

13.2 kg

17 kg

**POWER
AMPLIFIERS
THE POWERS
THAT BE**



PLM SERIES

F030019
PLM3000

F030020
PLM6800



POWER LIMITED MONSTER THAT'S IT!

Per controllare un grosso sistema audio, serve un grosso amplificatore: è così che nasce la serie di amplificatori più potenti di casa Montarbo®.

La sua qualità invidiabile rigorosamente *made in Italy* è direttamente proporzionale ai componenti interni che lo distinguono. Il progetto è nato col fine di avere il massimo dell'efficienza combinato al massimo della semplicità d'uso.

I suoi potenti quattro canali sono controllati da un evoluto DSP interno che vi mette a disposizione ben otto preset regolabili secondo i vostri gusti personali, oltre ad altri 8 preset di fabbrica preimpostati.

Non lasciatevi intimorire dalla tecnologia, perché Montarbo® metterà tutto nelle vostre mani dandovi libero accesso a controlli fondamentali come guadagni d'ingresso, volumi in uscita, ritardi ed equalizzazione, tutto gestibile grazie al software RACon™ collegabile al vostro PC tramite l'interfaccia USB **LD2.4** ideata appositamente per aprirvi le porte dell'audio professionale. I tecnici Montarbo® ne consigliano l'uso con il sistema TOP Line Array.

It takes a large amplifier to control a large audio system: thus came about Montarbo®'s most powerful series of amplifiers.

Its enviable quality, which is rigorously made in Italy, is directly proportional to the internal components it stands out for. The project was created with a view to ensuring maximum efficiency, combined with maximum simplicity of use.

Its four powerful channels are controlled by an evolved internal DSP, which makes a good eight pre-set options available for setting according to personal taste, and another 8 factory-set pre-settings.

*Do not allow yourself to be intimidated by the technology, because Montarbo® puts it all in your hands, giving you free access to essential controls such as input gain, output volume, delay and equalising, all fully manageable thanks to the RACon™ software that can be connected to your PC using the USB **LD2.4** interface designed specifically to pave your way to professional audio. The Montarbo® technicians recommend its use with the TOP Line Array system.*

**I tecnici Montarbo® ne suggeriscono le seguenti applicazioni:
Montarbo® technicians suggest the following applications:**



ACCESSORIES PLM3000 · PLM6800: LD2.4 (p.74)

SPECIFICATIONS	PLM3000	PLM6800
Power EIAJ - all ch operating Each ch (1 kHz, 1% THD)	4 Ω 750 W 8 Ω 370 W	4 Ω 1500 W / 2000 W 8 Ω 1100 W
Slew Rate (8 Ω)	50 V/μs (input filter disabled)	30 V/μs (input filter bypassed)
S/R ratio (amplifier+processor)	> 100 dB (unweighted)	> 100 dB (unweighted)
Distortion	< 0.5% (THD, DIM, SMPTE)	< 0.5% (THD, DIM, SMPTE)
Channels	4	4
Inputs	4, Balanced	2, Balanced
Inputs impedance	10 kΩ	10 kΩ
Total gain	32 dB	38 dB
Efficiency (4 Ω load)	75% (typical)	75% (typical)
Bandwidth (4 Ω)	10 Hz ÷ 24 kHz	5 Hz ÷ 25 kHz
Damping factor (20 Hz-1000 Hz)	> 500	> 200
Dimensions	2U 19" rack x D 455 mm	2U 19" rack x D 526 mm
Weight	9 kg	11.5 kg

GRAVIS SERIES

F040002
GRAVIS 24

F040003
GRAVIS 30

F040004
GRAVIS 46

F040006
GRAVIS 62



GRAVIS 24



GRAVIS TRAINS HAVE THRICE DISTURB'D THE QUIET OF OUR STREETS

Questa è la valida alternativa alla serie PLM che Montarbo® decide di darvi, senza togliere nulla alla qualità, a differenza di quel che riesce a togliere invece, sull'attualissimo fattore prezzo.

La serie **GRAVIS** infatti, non ha molto da invidiare ai cugini di sangue blu, e con una potenza considerevole e una facilità d'utilizzo notevole, guadagna punti sul mercato senza far rimpiangere troppo prodotti di costo superiore.

Il suo look semplice e accattivante, con la sua maneggevolezza e versatilità, vi conquisterà per dare fiato a qualunque tipo di cassa voi vogliate utilizzare.

This is the valid alternative to the PLM series that Montarbo® decides to give you, without taking from quality, but instead taking from the price - bringing it entirely up-to-date and in keeping with today's demands.

*The **GRAVIS** series has very little to envy of its blue-blooded cousins and with considerable power and an easy-to-use design, it gains market standing without leaving you wishing for more expensive products.*

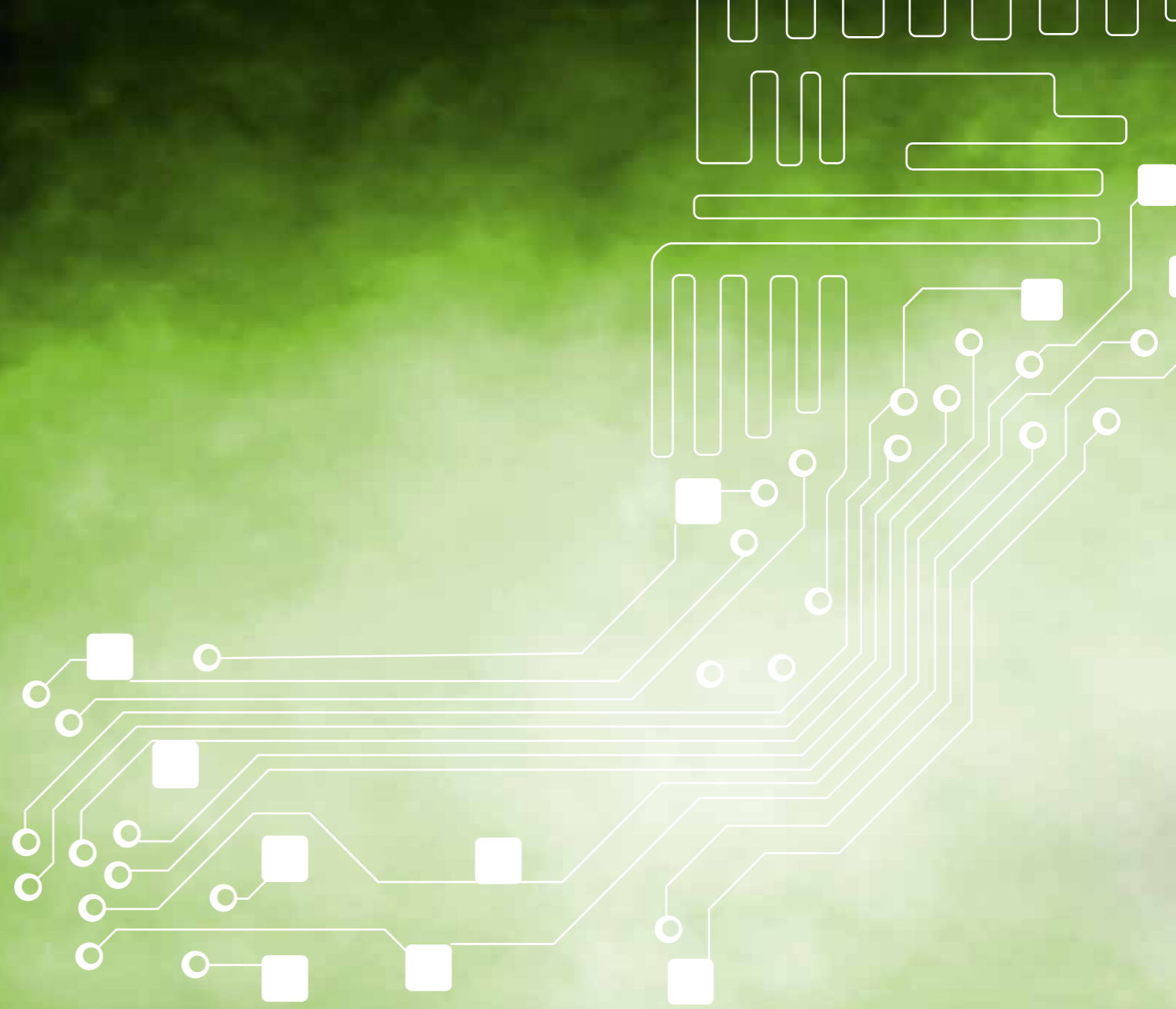
Its simple, yet captivating look and easily-handled, versatile design will win you over whatever loudspeaker you wish to use.

I tecnici Montarbo® ne suggeriscono le seguenti applicazioni:
Montarbo® technicians suggest the following applications:



SPECIFICATIONS	GRAVIS 24	GRAVIS 30	GRAVIS 46	GRAVIS 62
8 Ω stereo power*	450 W x 2	650 W x 2	850 W x 2	1200 W x 2
4 Ω stereo power*	750 W x 2	1100 W x 2	1400 W x 2	2000 W x 2
2 Ω stereo power**	1150 W x 2	1400 W x 2	2300 W x 2	3000 W x 2
8 Ω bridge power*	1600 W	2280 W	3000 W	4100 W
4 Ω bridge power**	2550 W	3200 W	4600 W	6500 W
Frequency response	20 Hz-20 kHz @ 8 Ω, (+/-0.5 dB)	20 Hz-20 kHz @ 8 Ω, (+/-0.5 dB)	20 Hz-20 kHz @ 8 Ω, (+/-0.5 dB)	20 Hz-20 kHz @ 8 Ω, (+/-0.5 dB)
THD+N(THD%)	< 0.1%	< 0.1%	< 0.1%	< 0.1%
Slew rate	20 V/us	20 V/us	20 V/us	20V/us
Damping factor (@100 Hz)	> 200	> 200	> 200	> 200
Dynamic range	≥ 80 dB	≥ 80 dB	≥ 80 dB	≥ 80 dB
S/N rate	≥ 90 dB	≥ 90 dB	≥ 90 dB	≥ 90 dB
Input Sensitivity	32 dB/1.0V/0.775V	32 dB/1.0V/0.775V	32 dB/1.0V/0.775V	32 dB/1.0V/0.775V
Voltage gain	38 dB	38 dB	38 dB	38 dB
Input Impedance	Bal 20K/Unbal 10K	Bal 20K/Unbal 10K	Bal 20K/Unbal 10K	Bal 20K/Unbal 10K
Output circuit class	Class 2H	Class 2H	Class 3H	Class 3H
Protection	Soft start, short circuit, overload, DC, over-heat, THD clip/limit, output volume increase gradually function after switch on, lack of voltage of SMPS, VHF, infrasound frequency protection, over-power limit, output power will be limited if over-heat			
Cooling air-flow	Airflow from front panel to rear panel			
Power voltage frequency	~230V ± 10% / 50-60 Hz	~230V ± 10% / 50-60 Hz	~230V ± 10% / 50-60 Hz	~230V ± 10% / 50-60 Hz
Gross weight	12 kg	12 kg	15 kg	16 kg

**MIXING
CONSOLES+
COMBOS
SUCCESSFULLY
MIX+COMBINE**



MC-R SERIES

F000164
MC-R8FX

F000162
MC-R12FX

F000163
MC-R16FX

F000218
MC-R12FXP

F000219
MC-R16FXP

MC-R16FXP

MC-R12FX

MC-R8FX

MC-R8FX	MC-R12FX	MC-R16FX	MC-R12FXP	MC-R16FXP
6 kg 4.25	10 kg 6.5	14 kg 8	10 kg 8.6 1500 W	14 kg 10.3 1500 W

THE EASIEST WAY TO MIX

Dopo un periodo di assenza, tornano sulla scena i prodotti che hanno lanciato la storia di Montarbo® sul territorio internazionale e che hanno fatto conoscere al mondo la genialità di Montanari.

La linea di mixer **MC-R** è solo il primo passo di un grande ritorno che suscita ingenti aspettative e fomenta il desiderio per gli appassionati del mixaggio a ritrovare ciò che negli anni passati rappresentava un must.

Disponibile in 5 versioni, la serie **MC-R** è stata migliorata sia a livello di tecnologia interna sia ottimizzando la qualità dei componenti, rendendo questa linea di mixer molto più accessibile al pubblico.

Ancora una volta Montarbo® dona alle vostre mani il potere di gestire tutta la tecnologia audio con massima facilità, permettendo il mixaggio delle vostre composizioni più creative, spingendo gli altissimi volumi per far scatenare il pubblico in delirio.

After some time away from the spotlight, the products are now back on stage that launched the history of Montarbo® internationally, and which brought the genius of Montanari to the world's awareness.

*The mixer **MC-R** line is just the first step in a great return that has much to deal with in terms of the expectations and desires of fans of mixing, in recovering what was once a must-have.*

*Available in 5 different versions, the **MC-R** series has been improved both with regards to its internal technology and having optimised component quality, making this line of mixers extremely accessible to the audience.*

Once again, Montarbo® gives you the power to manage all audio technology extremely easily, allowing you to mix your most creative compositions, driving the high volumes up to make the public go mad.

I tecnici Montarbo® ne suggeriscono le seguenti applicazioni:
Montarbo® technicians suggest the following applications:



SPECIFICATIONS MC-R8FX / MC-R12FX / MC-R16FX

Mono-In (Mic/Line) with Inserts MC-R8FX: 6; MC-R12FX: 8; MC-R16FX: 12
Phantom power supply 48 V
Equalization 3-band (MF semipar)

Stereo-Line/Mono-Mic-Input Ch 2
Equalization 3-band

Fader (throw / attenuation) 60 mm / >100 dB

Stereo effects processor 2 x 205 stereo effects
A-D and D-A conversion 24 bit Σ - Δ
internal DSP 56 bit

External effect send 2
External effect return 2 (stereo)

Aux (pre-fader/post EQ) 2

Master outputs L/R, Control Room, Tape, Codec
Frequency response 10 Hz ÷ 20 kHz (+0 dB / -2 dB)
S/N R > 85 dB (nom.levels, EQ flat)

Dimensions (WxHxD) MC-R8FX: 243 x 400 x 120 mm
MC-R12FX: 340 x 400 x 120 mm
MC-R16FX: 444 x 400 x 120 mm

Weight MC-R8FX: 4.25 kg
MC-R12FX: 6.5 kg
MC-R16FX: 8 kg

Built-in amplifiers MC-R12FXP / MC-R16FXP
Total output power (W EIAJ) 2 Class-D amplifiers, with SMPS
750 + 750 W @ 4 Ω
Protections electronic, thermal, short circuit, delayed power-up sequence.

Dimensions (WxHxD) MC-R12FXP: 340 x 400 x 170 mm
MC-R16FXP: 444 x 400 x 170 mm

Weight MC-R12FXP: 8.6 kg
MC-R16FXP: 10.3 kg

MX-C SERIES

F000165
MX20C

F000166
MX28C



LEARNING FROM THE PAST LOOKING AT THE FUTURE

Molti ricordano la storica linea di mixer Montarbo® che ha spopolato fino a pochi anni fa tra i professionisti del settore, generando una vera e propria corrente filosofica di mixer professionali. È atteso sul mercato come si attende Babbo Natale il 24 Dicembre: finalmente se ne annuncia il ritorno per il 2013, in versione rivisitata in ogni componente. Ancora oggi gli intenditori cercano e richiedono la vecchia produzione **MX** che, nonostante la veneranda età e considerando la recente evoluzione dei mixer, rimane un oggetto di alta professionalità e di grande efficienza. Immaginate quanto potrà soddisfarvi la nuova versione. Disponibile da 20 e 28 canali, con quantità di effetti e controlli smisurata, l'evoluta serie **MX-C** offrirà una sezione di equalizzazione da brividi, confermando ancora una volta la qualità *made in Italy* a cui Montarbo® non rinuncia.

*Many remember this historic line of Montarbo® mixers that was all over sector professionals up until a few years ago, generating a real philosophical current of professional mixers. It was awaited on the market just as Santa is awaited on Dec 24th and finally Montarbo® has announced its return for 2013, in a revised, improved version in all aspects. Still today, a great many experts look out for the old **MX** production, which, despite its considerable age and in view of the recent evolution of mixers, still remains a highly professional, extremely efficient product. Try to imagine how happy you will be with the new version. Available with 20 or 28 channels, with an incredible quantity of effects and controls, the evolved **MX-C** series will provide an equalisation section that is truly fearsome, once again confirming the quality of made in Italy by Montarbo®.*

I tecnici Montarbo® ne suggeriscono le seguenti applicazioni:
Montarbo® technicians suggest the following applications:



SPECIFICATIONS

MX20C / MX28C

Mono input channels	MX20C: 12 / MX28C: 20
Micro (sensitivity/impedance)	60 dB / 2,2 kΩ
Line (sensitivity/impedance)	30 dB / 33 kΩ
Insert-in (sensitivity/impedance)	0 dB / 33 kΩ
Phantom power supply	48 V
Equalization	H.F ± 15 dB @ 15 kHz M.F (freq) 0,18 ÷ 3 kHz M.F (level) ± 15 dB L.F ± 15 dB @ 50 Hz
Stereo input channels	4
Micro (sensitivity/impedance)	40 dB / 10 kΩ
Equalization	H.F ± 15 dB @ 15 kHz (shelving) M.F ± 15 dB @ 600 Hz (peaking) L.F 15 dB @ 50 Hz (shelving)
Equivalent input noise	127 dB
Crosstalk (between channels)	> 70 dB @ 1 kHz
Fader (throw/attenuation)	100 mm / > 80 dB
Stereo effects processor	2 x 205 stereo effects
A-D and D-A conversion	24 bit Δ/Σ
Internal DSP	56 bit
Bandwidth	40 Hz ÷ 15 kHz
External effect send	2
Nominal level	10 dB / 100 Ω
External effect return	2 (stereo)
Nominal level	10 dB / 10 kΩ
Monitor outputs	6
Nom. level/max. level	0 dB / 22 dB
Equalization (pre fader)	H.F ± 15 dB @ 15 kHz M.F (freq) 0,18 ÷ 3 kHz M.F (level) ± 15 dB L.F ± 15 dB @ 50 Hz
Master outputs	L/R; C.Room; Mono
Nominal level/max. level	0 dB / 22 dB
Frequency response	20 Hz ÷ 30 kHz (+ 0 dB / -2 dB)
S.N.R	> 80 dB (nom.levels, EQ flat)
Stereo graphic equalizer	31-63-125-250-500 Hz
Center frequency/range	1-2-4-8-16 kHz / ± 12 dB
Dimensions (WxHxD)	MX20C: 815 x 105 x 690 mm / MX28C: 1046 x 105 x 690 mm
Weight	MX20C: 21 kg / MX28C: 29 kg

MX20C

MX28C



MP SERIES

F000521
MP4F000522
MP6

MP4



MP6

MP4



MP6



HEY HOUSTON WE'VE HAD A PROBLEM, 4 OR 6 CHANNELS?

La serie **MP** è stata progettata in casa Montarbo® per deliziare con la qualità *made in Italy* coloro che solitamente tendono a fare musica in stile One Man Band, creando un prodotto che racchiuda in sé tutto ciò che serve per emozionare chi si troverà dalla parte opposta ad ascoltarvi.

Tutto a portata di mano: mixer con controlli ed effetti, altoparlanti efficienti e ogni connessione possibile per i vostri apparecchi associati, tutto gestito da processori di alta qualità per un prodotto estremamente autonomo.

La grande versatilità, l'estrema portabilità grazie anche alla maniglia estraibile e la completezza che contraddistingue questi Combo, permettono gli usi più diversificati, dalle prove nella vostra abitazione collegando direttamente la vostra chitarra sin alle feste all'aperto con amici e parenti.

Sottolineando l'affidabilità e la qualità che Montarbo® vi garantisce da oltre 50 anni, la serie **MP** non ammette ovviamente categorie d'utilizzo, ma conferisce libero arbitrio su modi e usi che più vi soddisferà applicare.

*The **MP** series has been designed by Montarbo® to delight those who generally tend to offer one-man-band style performances with true made-in-Italy quality, having created a product that encompasses everything needed to excite those on the other side, listening.*

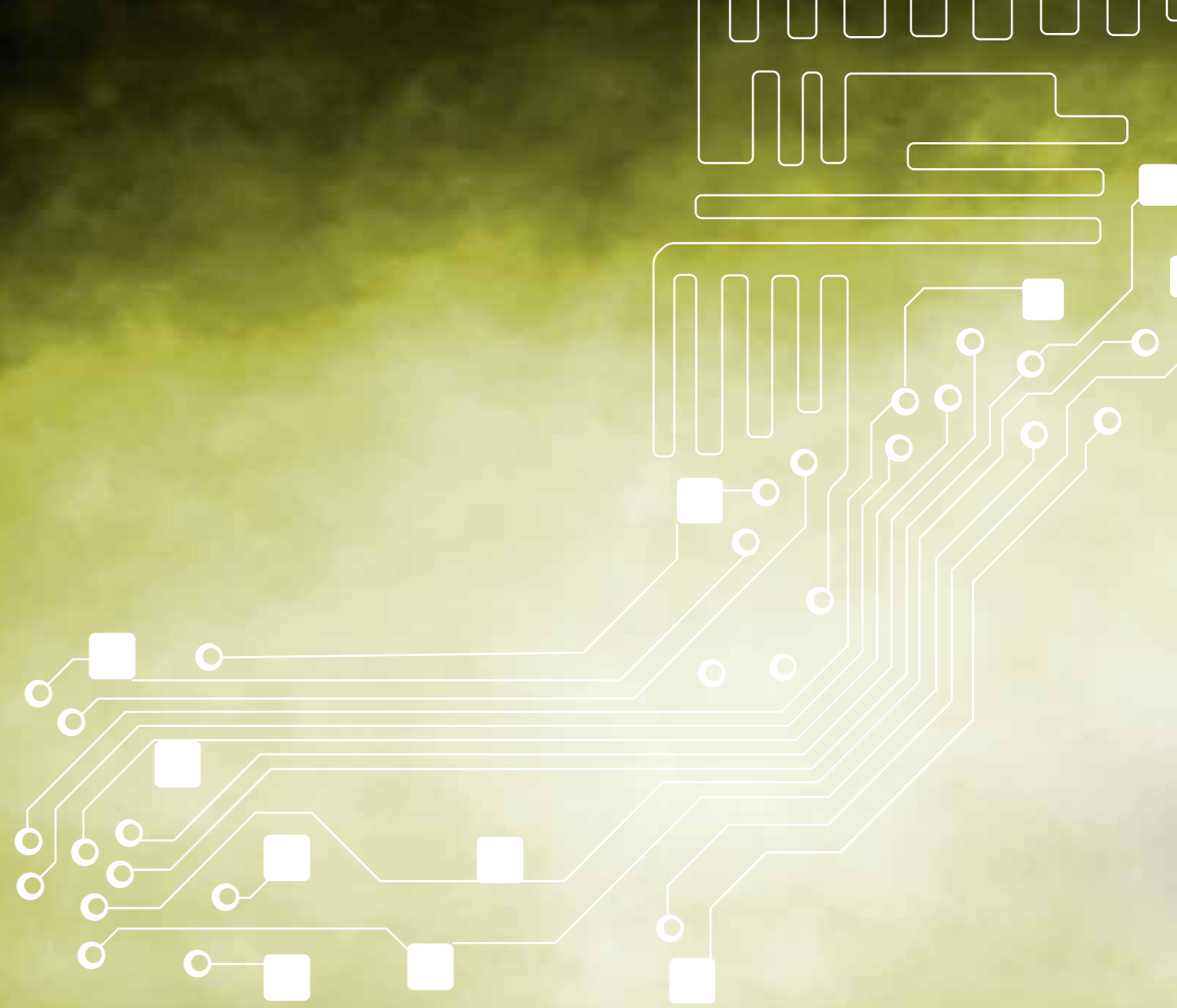
Everything is within reach: mixers with controls and effects, efficient speakers and all connections possible for your associated equipment, all managed by high quality processors for an extremely independent product.

The great versatility and extreme portability, also thanks to the extractable handle and completeness that features in these Combos, mean that it can be used in various different ways, from rehearsals in the home, connecting your guitar directly, through to open-air parties with friends and family.

*In stressing the reliability and quality that Montarbo® has been guaranteeing for more than 50 years, the **MP** series clearly does not have specific categories of use, but leaves the choice of how and where you wish to apply it entirely up to you.*

SPECIFICATIONS	MP4 - active	MP6 - active
Frequency response	46 Hz ÷ 20 kHz	40 Hz ÷ 20 kHz
Max SPL	123 dB	127 dB
Components	Custom-designed	Custom-designed
Bass frequencies	12" woofer	15" doped paper woofer
Mid/high frequencies	1" dynamic driver loaded by a 90° x 60° horn	1" dynamic driver loaded by a 90° x 60° horn
Built-in power amplifiers	1 class-AB, MosFet, dedicated power unit	1 class-AB, MosFet, dedicated power unit
Max output power	100 W	300 W
Built-in mixer	4 channels - channel 1 mic.	6 channels - channels 1 - 2 mic.
Equalization	HF ± 15 dB @ 15 kHz MF ± 15 dB @ 600 Hz LF ± 15 dB @ 50 Hz	HF ± 15 dB @ 15 kHz MF ± 15 dB @ 600 Hz LF ± 15dB @ 50 Hz
Built-in effect	reverb - chorus	16 alterable presets
Conversion	24 bit Σ-Δ	24 bit Σ-Δ
Dimensions (WxHxD)	380 x 600 x 305 mm	460 x 680 x 360 mm
Weight	16.5 kg	27 kg

ACCESSORIES
WHAT ELSE
YOU NEED



LINE ARRAY ACCESSORIES

F030016
B1

F030013
B2



F030016
B1

Steel suspension frame for flying up to 16 RA16 (or 8 RA18)

F030013
B2

Steel suspension frame for flying up to 8 RA16 (or 4 RA18)

F030017
4FT

Set of 4 anti-slip feet for B1 & B2 stacked use

F030015
CKPP

Set of Speakon® power – out cable to connect 8 RA16 & 4 RAB1815:
4 pcs 4-pole 15 m length
4 pcs 8-pole 10 m length
4 pcs 4-pole 0.5 m length

F030018
CKMPP

Set of Speakon® power – out cable to connect 4 RA16 & 2 RAB1815:
2 pcs 4-pole 15 m length
2 pcs 8-pole 10 m length
2 pcs 4-pole 0.5 m length

F030030
FC8U

8U 19" Rack flight-case. For 4 pcs of 2U power Amp

F030031
FC-4RA16

Flight case housing 4 RA16 + B2 bumper

F030032
COV-RAB

Cover for RAB1815

F030033
SK-RAB

Skate for RAB1815

F030047
FC-2RA18

Flight case housing 2 RA18 + B2 bumper

F030048
COV-MOL1818

Cover for MOL1818

F030049
COV-3MOL1818

Large cover for two-three MOL1818 units.

LM SERIES

F030012
LM24



LM24



LM DOES IT STAND FOR LIFE MANAGING ?

Fornisce tutte le funzioni di elaborazione di segnale per il sistema professionale Line Array by Montarbo®.

I convertitori AD/DA Σ - Δ a 24 bit permettono di mantenere la massima qualità audio ed un potente DSP a 56 bit gestisce tutte le funzioni di limitatore, filtri d'incrocio, ritardo ed equalizzazione per i quattro canali in uscita. Un ampio display LCD permette la verifica delle funzioni del sistema e l'intuitivo pannello comandi consente la selezione del preset ed il controllo diretto di guadagno, livello, ritardo e mute delle 4 uscite. **LM24** vanta un rapporto segnale-rumore superiore a 100 dB ed i convertitori offrono una gamma dinamica di 113 dB in ingresso e di 112 dB in uscita.

Realizzato in acciaio inossidabile, il pannello anteriore presenta comandi poco sporgenti e scritte incise per resistere ad un uso intenso. L'alimentazione a commutazione lo rende utilizzabile con qualsiasi tensione di rete da 100 a 250 V (CA), a 50 o a 60 Hz.

LM24 incorpora otto diversi preset di fabbrica, corrispondenti a cinque diverse configurazioni di PalcoPlus, che variano da un sistema che utilizza solo un sub e 2 **RA16** a grandi array con parametri long-throw e short-throw.

Le connessioni bilanciate d'ingresso e d'uscita sono fornite da connettori Neutrik® XLR, e le due interfacce seriali RS485FD su connettori RJ45 permettono il controllo per mezzo del software RACon™.

It provides signal processing for the Professionale Line Array system by Montarbo®.

*AD/DA Σ - Δ conversion is carried out with 24-bit quantization in order to maintain the highest audio quality, while a powerful 56-bit DSP provides all the functions of crossover, limiting, delay and equalization for the four output channels. A convenient backlit LCD display allows verification of system functions, and simple panel controls permit preset selection and local control of gain, level, delay and output muting. **LM24** boasts a signal-to-noise ratio greater than 100 dB, and the converters offer a dynamic range of 113 dB at the input and 112 dB at the output.*

The front panel is designed to take all the abuses of the road, being made entirely of stainless steel, and using etched lettering. Its switching power supply allows it to be used with any voltage from 100 to 250 V (AC), at 50 or 60 Hz.

***LM24** comes preprogrammed with eight presets, specifically made for use in five different configurations of PalcoPlus, from small systems using one sub and two **RA16**s, to long-throw and short-throw parameters for large arrays.*

Balanced input and output connections are provided through Neutrik® XLR connectors, and two RJ45 connectors provide RS485FD serial interfaces for network control using the RACon™ software.

ACCESSORIES LM24: LD2.4 (p.74)

SPECIFICATIONS	LM24
Power supply	SMPS 100-240 V AC - 50/60 Hz
Inputs/outputs	2 inputs / 4 outputs, Balanced, max level +13 dBu
Connectors	4 x XLR3M (output) 2 x XLR3F (input) 2 x RJ45 (RS485FD)
DSP	56 bit
ADC	24 bit Dynamic range 112 dB
DAC	24 bit Dynamic range 113 dB
S/N ratio	> 100 dB
Factory presets	8
User presets	8
Dimensions	1U rack 19" x D 230 mm
Weight	3 kg

LD SERIES

F030014
LD2.4



NOW YOU CAN REALLY DO EVERYTHING

Interfaccia autoalimentata che permette il controllo ed il monitoraggio di un massimo di otto **LM24** o **PLM6800** per mezzo di un'unica porta USB del computer di controllo.

Una porta seriale RS485FD su connettore RJ45 è collegata al primo **LM24** o **PLM6800** con un cavo CAT5 di 100 m di lunghezza massima e gli **LM24** o **PLM6800** successivi vengono collegati in cascata, semplificando la connessione via cavo del computer con i rack degli amplificatori.

La connessione di rete tra **LD2.4** ed i processori utilizza una interfaccia standard RS485FD ed un protocollo proprietario Montarbo®.

*This compact, USB-powered interface permits the control and monitoring of up to eight **LM24** processors (or **PLM6800**), using a single USB port of the controlling computer.*

Data connection is provided by a single RJ45 connector - a single CAT5 cable is run up to 100 m to the first processor and further processors are connected in series, simplifying cable runs from the computer to the amp racks.

*The network connection between the **LD2.4** and the processors is through a standard RS485FD interface using Montarbo®'s proprietary protocol.*

SPECIFICATIONS	LD2.4
Dimensions (WxHxD)	73 x 45 x 22 mm
Connections	1 x USB - B 1 x RJ45 Physical layer - RS485 OS - Windows
Maximum network cable length	100 m (CAT5)
Maximum network size	8 x LM24 o 8 x PLM6800

STANDS + BAGS + COVERS

F030039
CV-SPOT

CV-SPOT

F030038
CV-W153

CV-W153

F030035
CV-F10

F030036
CV-F18



CV-F10

CV-F18

F000706
S/203

Adjustable speaker stand

F000704
STM

Standard speaker stand

F000705
STS

Light speaker stand

F000711
ST250P

U-shaped wall bracket for NM250 loudspeaker

F030035
CV-F10

Protective cover for FULL10 satellite

F030036
CV-F18

Protective cover for FULL18 bass cabinet

F030037
CV-W123

Protective cover for models WIDE123, WIDE12P4 and WIDE12P8

F030038
CV-W153

Protective cover for models WIDE153, WIDE15P4 and WIDE15P8

F030039
CV-SPOT

Protective cover for the models SPOT2500, SPOT15B and SPOT1500

F030040
BAG-2F6

Protective transport bag for a pair of FULL6 satellites

F030041
BAG-F12

Protective transport bag for one FULL12 bass cabinet

F030045
FC-Floor12

Flight case for a pair of FLOOR 12"

F030046
FC-2E6

Flight case for a pair of E616M

© Copyright 2013 Elettronica Montarbo srl.

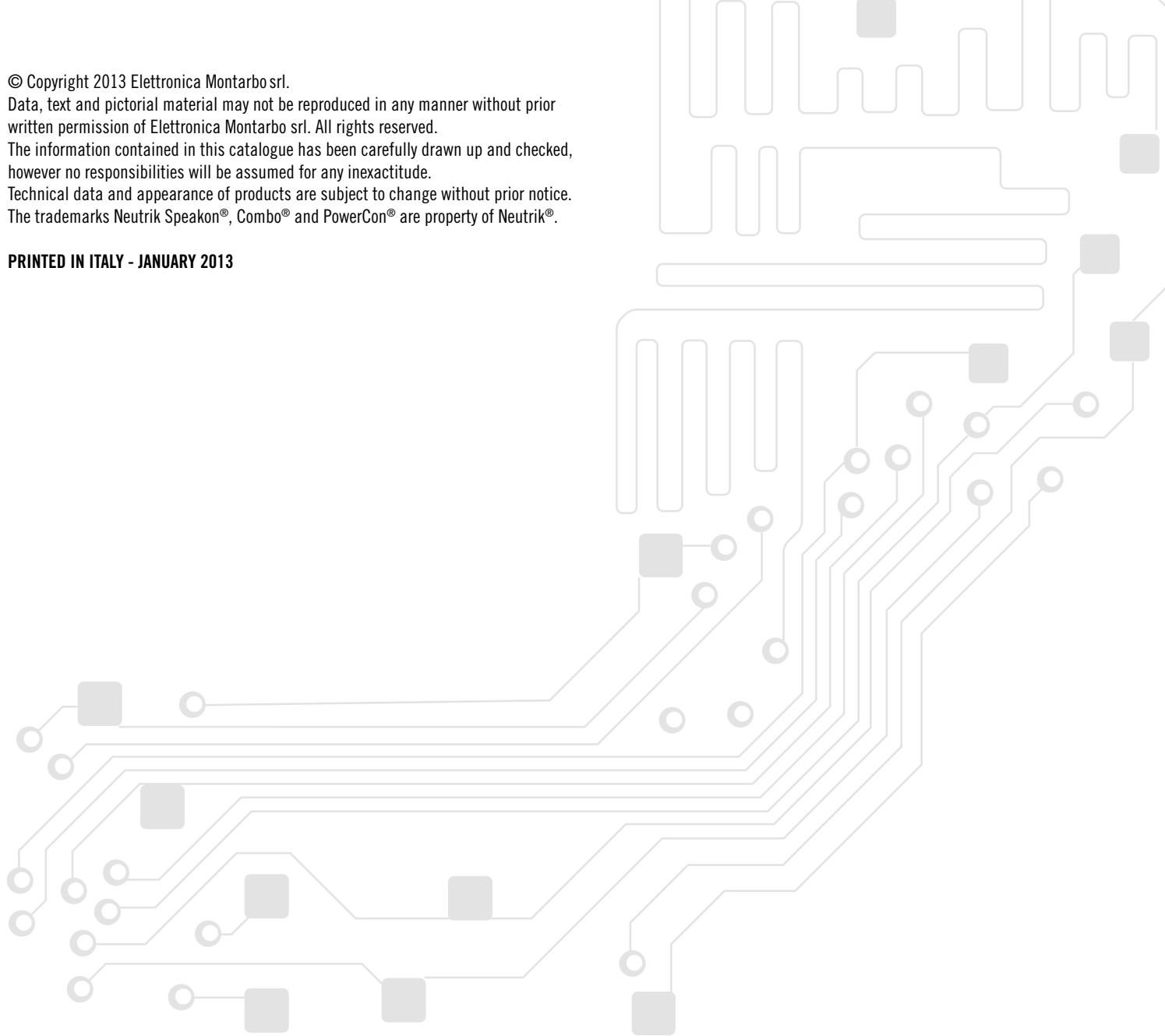
Data, text and pictorial material may not be reproduced in any manner without prior written permission of Elettronica Montarbo srl. All rights reserved.

The information contained in this catalogue has been carefully drawn up and checked, however no responsibilities will be assumed for any inexactitude.

Technical data and appearance of products are subject to change without prior notice.

The trademarks Neutrik Speakon®, Combo® and PowerCon® are property of Neutrik®.

PRINTED IN ITALY - JANUARY 2013



www.montarbo.com





www.montarbo.com

Electronica Montarbo srl
via G. di Vittorio 13 | 40057 Cadriano Granarolo Emilia (BO) ITALY
T +39 051 6047711 | F +39 051 765226 | mail@montarbo.com

Company under control of EKO Music Group SpA

